

Providing quality marking equipment since 1930

NUMBERALL

Stamp & Tool Co., Inc.

P.O. Box 187, 1 High Street
Sangerville, ME 04479

Phone: (207) 876-3541
Fax: (207) 876-3566

www.numberall.com
sales@numberall.com



COMPANY HISTORY

Numberall Stamp & Tool Co., Inc. has been designing, manufacturing and servicing a complete line of quality marking equipment since 1930. The Numberall name has become synonymous with the highest standards for design, craftsmanship, engineering and product reliability in the industry.

Originally based in Staten Island, NY, the company now has its corporate headquarters, sales, engineering and manufacturing facilities in Sangerville, ME. By operating in the heart of one of Maine's foremost recreational areas, Numberall has been able to utilize the pool of quality craftsmen for which this state has been known.

Numberall's equipment can be used to mark an array of components such as nameplates, tags, keys, small parts, bushings, round shafts and completely assembled parts. Each of these components can be marked with numbers, letters, symbols, logos, and any other identifying marks. Numberall offers the equipment to mark virtually any material from stainless steel to PVC.

You can find Numberall's markings from the far reaches of space aboard the Space Shuttle to the depths of the oceans on board this country's submarine fleet, and from identifying tags on cattle to sophisticated electronic components in today's marketplace. Our wide variety of marking devices has been constantly improved and updated over the years to reflect technological advances in the industry. The thousands of Numberall products still in service after more than 80 years are testimonial to the quality and standards that have made us a leader in the industry.

METHODS OF MARKING

Marking may be accomplished by many diverse methods employing different equipment for each individual situation. To determine the best marking method, each situation must be thoroughly analyzed. The composition and configuration of the material must be noted, and the quantity of pieces marked, whether the numbering is random, sequential, alpha numeric, etc., the number of characters per impression, the total number of impressions to be made, the size characters to be marked, the force required to make the impression, and any special limitations of the manufacturing process.

This catalog will provide you with the information necessary to choose the correct equipment you need. In addition we have included an Impression Length Ruler and Marking Requirements Questionnaire along with our Price Lists in the back flap of the cover. You can complete the Questionnaire and return it to our Sales Department to obtain their help evaluating your needs.

We have a competent staff in Sales and Engineering who are always available to answer any questions you might have about our equipment and its application in your marking operations. You can contact them by calling (207) 876-3541.

CHARACTER SPECS	02
CHARACTER STYLES	03
CLEANING	04
STEEL HAND STAMPS	05
CUSTOM STEEL STAMPS	06
SINGLE WHEEL ROTARY STAMPS	07
TYPE HOLDERS	08
MODEL 22 — TYPE HOLDER — LIGHT DUTY	08
MODEL 23 — TYPE HOLDER	09
TYPE FONTS & DELUXE TYPE BOX	14
MODEL 60 — NON-AUTOMATIC MULTI-WHEEL MACHINES	18
MODEL 70H — NON-AUTOMATIC MULTI-WHEEL MACHINES	19
MODEL 70P — NON-AUTOMATIC MULTI-WHEEL MACHINES	19
MODEL 73H.D. — NON-AUTOMATIC MULTI-WHEEL MACHINES	20
MODEL 80 — 1 WHEEL QUICK-CHANGE MACHINES	21
MODEL 85 — 2 WHEELS QUICK-CHANGE MACHINES	22
MODEL 83 — ALL WHEELS QUICK-CHANGE MACHINES	23
MODEL 50 — FULLY AUTOMATIC NUMBERING MACHINES	24
FIXTURES & KEY NESTS	28
NEW QUICK-CHANGE DOVETAIL ADAPTER	28
MODEL 98 — PLATFORM	30
MODEL 47 — MARKING APPARATUS	31
STAMP HOLDER NO.49	32
MODEL 40B — NUMBERING & LETTER PRESS	33
MODEL 94 — TYPE HOLDER NUMBERING & LETTERING PRESS — HEAVY DUTY	34
MODEL 301-301A — CYLINDRICAL MARKING MACHINES	36
MODEL 136-136A — BENCH NUMBERING PRESS	38
MODEL 137 MOTORIZED — BENCH NUMBERING PRESS	40
MODELS 131-131A-133 — HEAVY DUTY BENCH MARKING PRESSES	42



Numberall Product Manuals
www.numberall.com/product-manuals/





CHARACTER CLEANING PICKS

In the indent marking industry, keeping characters clean helps prolong the life of the equipment. While buildup of material can cause characters to fail, Numberall's character cleaning picks can eliminate problems before they arise. Like all Numberall Stamp & Tool Company products, each pick is made in the USA of chromium-vanadium 8650 alloy steel protected with black oxide. The pick and nickel plated steel ferrule is hand assembled to the Made-in-Maine hardwood handle. We offer two styles: a 30-degree bend and a double bend. Each pick comes packed in a leather pouch for safe storage.



STANDARD HAND STAMPS



27 PIECE LETTER SET



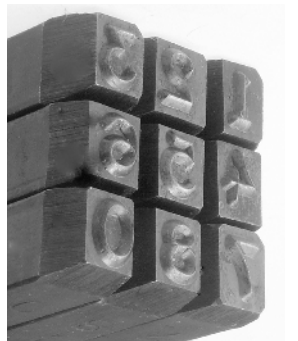
9 PIECE FIGURE SET

Numberall's Standard Hand Stamps are constructed of high-impact tool steel, precision heat-treated and tempered, for hard, continuous use and long life. They resist chipping from repeated hammer blows. Characters are designed with heavy supporting bevels. All hand stamps are marked on the thumb side for positive identification and locating purposes.

BOXED HAND STAMPS SETS

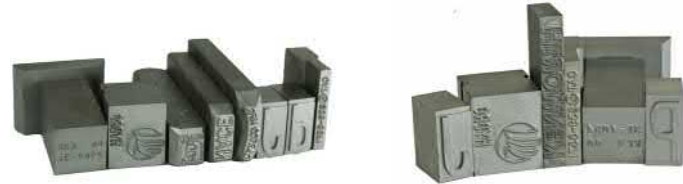
Each set of hand stamps is conveniently packaged in an easily accessible 27-Piece Boxed Set, which also functions as a workbench holder for everyday use. The figure set contains 9 stamps; the figure 6, when inverted, is also used for the figure 9. The letter set has 27 stamps, A to Z and the character "&".

Standard Steel Hand Stamps are supplied with Sharp Face Gothic Characters, Style 523. Other styles shown on the Character Specs & Styles are available at an additional cost. View page 47.



Size of Character	Figure Set Catalog #	Letter Set Catalog #	Size of Steel Square	Overall Length of Shank
1/32	SS-132-F	SS-132-AZ	1/4"	2-3/8"
1/16	SS-116-F	SS-116-AZ	1/4"	2-3/8"
3/32	SS-332-F	SS-332-AZ	5/16"	2-1/2"
1/8	SS-18-F	SS-18-AZ	5/16"	2-1/2"
5/32	SS-532-F	SS-532-AZ	3/8"	2-3/4"
3/16	SS-316-F	SS-316-AZ	3/8"	2-3/4"
1/4	SS-14-F	SS-14-AZ	7/16"	3"
5/16	SS-516-F	SS-516-AZ	1/2"	3"
3/8	SS-38-F	SS-38-AZ	9/16"	3-1/8"
1/2	SS-12-F	SS-12-AZ	5/8"	3-1/8"

CUSTOM STAMPS



From multi-character hand stamps to press dies, from trademarks to symbols, Numberall's Custom Steel Stamps are made to order to suit your exact requirements.

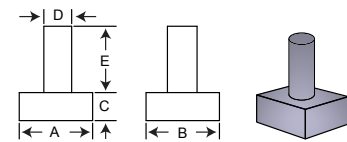
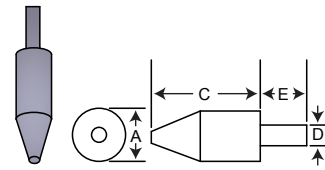
ORDERING INFORMATION

When ordering your Custom Steel Stamps, the following information is required to process your order:

- Type of stamp – hand, press, or logo insert
- Artwork for the design (for trademarks or logos)
- Size of the design or character size
- Character style (e.g., Sharp Face, Flat Face, etc.)
- Area available for stamped impression
- Contour of surface being stamped (e.g., curved, flat, round, etc.)

The blank style and dimensions are also required. Refer to the drawings on following page for specific configurations, or submit sketches. When custom hand stamps are ordered, the blanks furnished will be sized according to the parameters of the engraving. Special stock dimensions and extra-long shanks are available upon request.

BEVELED ROUND PRESS DIE

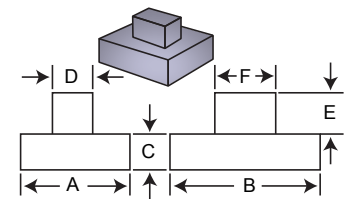
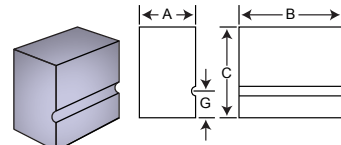


RECTANGULAR / SQUARE PRESS DIE

Round Shank

RECTANGULAR / SQUARE LOGO INSERTS

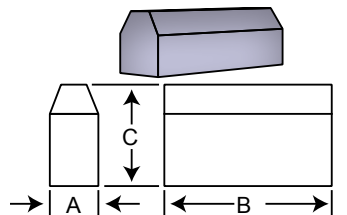
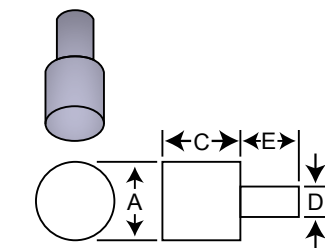
Rectangular / Square Shank



RECTANGULAR / SQUARE PRESS DIE

Rectangular / Square Shank

ROUND PRESS DIE



BEVELED RECTANGULAR / SQUARE PRESS DIE



SINGLE-WHEEL ROTARY STAMPS

Eliminate searching for up to 40 individual hand stamps. By simply rotating the character wheel with your thumb and forefinger, characters can be changed quickly and precisely. For ease of arrangement and orientation, the wheels are indexed with the character configuration on the side of the wheel facing the user. Rigidly constructed and well-balanced, single wheel rotary stamps provide an efficient means of stamping individual characters. The Rotary Stamp is available with either a hand or press style shank. Consult factory for pricing and availability.

CONSTRUCTION & PARTS

Careful inspection and testing throughout the manufacturing process ensure that each rotary stamp meets Numberall's high quality standards. By using high quality heat-treated alloy tool steel, the rotary stamps provide maximum life under severe usage. Replacement wheels and parts are readily available for years of service. Special character arrangements and styles are available upon request.

Note: Character wheels of different sizes cannot be used in the same shank.

INDIVIDUAL, LETTER SETS, OR DELUXE SETS

Single wheel rotary stamps are available individually or in letter sets in plastic pouches, or as a deluxe set packed in a convenient wooden box. The letter set contains two individual letter hand stamps. The deluxe single wheel rotary set contains three individual hand stamps, for a total of 40 characters.

HAND STYLE AND PRESS STYLE ▶



DELUXE SET WITH STORAGE BOX ▲

CHARACTER WHEEL SETS

Size	Figure Stamp 1 through 0, X,	Letter Stamp A through Mand &	Letter Stamp N through Z	Letter Set A through M & N through Z	Deluxe Set Includes Figure and Letter Sets	Shank Size
1/16"	RS-116-F	RS-116-AM	RS-116-NZ	RS-116-AZ	RS-116-D	1/2" x 1/2" x 3 7/16"
3/32"	RS-332-F	RS-332-AM	RS-332-NZ	RS-332-AZ	RS-332-D	1/2" x 1/2" x 3 7/16"
1/8"	RS-18-F	RS-18-AM	RS-18-NZ	RS-18-AZ	RS-18-D	9/16" x 9/16" x 3 7/16"
5/32"	RS-532-F	RS-532-AM	RS-532-NZ	RS-532-AZ	RS-532-D	9/16" x 9/16" x 3 7/16"
3/16"	RS-316-F	RS-316-AM	RS-316-NZ	RS-316-AZ	RS-316-D	9/16" x 9/16" x 3 7/16"
1/4"	RS-14-F	RS-14-AM	RS-14-NZ	RS-14-AZ	RS-14-D	7/8" x 5/8" x 4 1/4"
5/16"	RS-516-F	RS-516-AM	RS-516-NZ	RS-516-AZ	RS-516-D	3/4" x 1 1/8" x 5 1/4"
3/8"	RS-38-F	RS-38-AM	RS-38-NZ	RS-38-AZ	RS-38-D	1 1/8" x 1" x 5 1/4"



ROTARY DATE STAMP MODEL 36B

The Model 36B is used when a month and year code are required. Utilizing a large shank with two independently movable character wheels, a quick, efficient means of date coding is achieved. One wheel is engraved with the characters 1 to 12, the other is engraved with your choice of six 2-digit year codes. Replacement wheels are available for future years.

MODEL 22

Model 22 is an economical holder for all light-duty, handheld marking tasks. Numberall's standard super quality steel type, up to a maximum of 5/32" characters, may be used. It is recommended for stamping brass, aluminum, plastic, and steel. Numberall's Super Quality Steel Type is purchased separately or in a 3A or 5A Font.

OPERATION

A removable pin holds the notched type securely in place. Because the type is notched, it cannot be inserted incorrectly. The pin is easily removed for quick character changes. Refer to the following chart for capacities. Blank spacers are required to fill any voids.

CONSTRUCTION & PARTS

The Model 22 is made of heat-treated alloy steel to resist chipping. The shank is plastic coated to absorb shock when it is struck with a hammer during the marking operation.



MODEL 22 WITH 5/8" SLOT

CHARACTER SIZE SPECIFICATIONS CAPACITY

Character Size	Dimensions of Type	Slot Size 5/8"	Slot Size 3/4"
1/32", 3/64", 1/16"	1/16"	10	12
3/32"	3/32" x 1/4" x 7/8" with notch	6 ¹	8
1/8"	1/8" x 1/4" x 7/8" with notch	5	6
5/32"	5/32" x 1/4" x 7/8" with notch	4	4 ²

¹ Requires 1/16" spacer

² Requires 1/8" spacer

Consult our Length of Impression Gauge, included with the catalog, to determine character size required and associated Length of Impression.



MODEL 23 TYPE HOLDER – HAND OR PRESS SHANK

The Model 23 Type Holder is used to stamp repetitive sequences with steel type. The Model 23 offers quick stamping of a uniformly spaced and aligned character sequence. Because the operator "sets" the type, virtually any sequence or code can be easily obtained. Numberall's Super Quality Steel Type is purchased separately or in a 3A or 5A Font. You will receive a Free Deluxe Type Box with each order of a Model 23 Type Holder.

OPERATION

A replaceable heat-treated steel anvil is used to support the base of the type characters. A type holding pin seats on a taper and prevents the notched type from falling out. During the marking operation, pressure bears on the anvil, rather than on the slot or pin.

CONSTRUCTION & PARTS

Numberall's one-piece hand shank frames are constructed using heat-treated high-grade alloy steel for increased durability. The hand shank is vinyl-coated to absorb shock during operation. The hardened steel anvil is replaceable for increased longevity of the tool.



COMPATIBILITY

The Model 23P's 1" x 1-1/4" or 1" x 2" shank is recommended for use in most hand or power presses. For presses requiring a special round shank, please consult the Price List*. For other than round shanks, please request a factory quote. The Model 23P equipped with optional standard dovetail shank is recommended for use in our hand and power presses. By using the shanks outlined in the Price List*, the Model 23P can easily be adapted to our various platforms or stamp holders.

OPTIONS

The Model 23 is available in numerous sizes and capacities, which start at 4 pieces and then increase incrementally by 2 pieces up to 16 pieces, depending on character sizes. We strive to maintain over 110 different sizes and capacity holders. By choosing the proper capacity, the use of blank spacers to fill voids can be minimized, thus setups can be accomplished more quickly and easily. Refer to our Price List* for different sizes and capacities.

- Hot Stamping Equipment
- Extra Capacity**
- Multiple Lines**



MODEL 23P AND TYPE

MODEL 23 VARIATIONS

The Model 23 Type Holder can be modified in many ways to suit specific marking situations. The units shown below are just a few of the many variations which can be adapted to suit specific applications. Extended capacity and multiple lines, with or without partition walls, are just a couple of the available options. All multi-line type holders utilize set screws instead of type holding pins. If type holding pins are desired, a partition wall is required and must be stated when ordering. If not stated, partition walls will not be used. Please contact our sales engineers with your requirements for a consultation or see standard steel type on page 44.



MODEL 23P-2 2 LINE



MODEL 23P-3 3 LINE WITH PARTITIONS



MODEL 23P-2 2 LINE WITH PARTITION



MODEL 23P SPECIAL KING SIZE

Model	Type Capacity	Type Size	Shank Size/Type	Partition Wall Size
Model 23P-2 2 Line	10 Pieces	1/8"	3/4" x 2"	None
Model 23P-2 2 Line with Partition	10 Pieces per line	1/8"	3/4" x 2"	1/8"
Model 23P-3 3 Line with Partitions	16 Pieces per line	1/8"	Dovetail	1/32"
Model 23P Special King Size	18 Pieces	1/2"	2" x 2"	N/A

*Please consult our Length of Impression Gauge, included with this catalog, to determine character size required and associated Length of Impression.

**See Variations of Model 23 on page 41 for photos of modified Model 23 Type Holders.



MODEL 24 DETAIL CHASE & PUNCH

The Model 24 offers a quick approach to stamping multi-line data plates with removable pieces of steel type. Each unit is custom designed for the data plate. Recesses are machined for just the number of characters per line or section. Because the tag is loaded and stamped upside down, type changes can be done quickly and easily by just lifting the type out of the recess and replacing it with another. Because of the recess, the type is not retained by screws or pins. The notch on our standard steel type provides a reference point so that characters are not inserted upside down.

COMPATIBILITY

Some applications of our hand and power presses may be suitable. Please contact our sales engineers for assistance.

OPTIONS

To save time, logotypes can be used for sequences that are commonly used and changed. All lines and panels can be stamped in one single stamping operation.

ORDERING INFORMATION

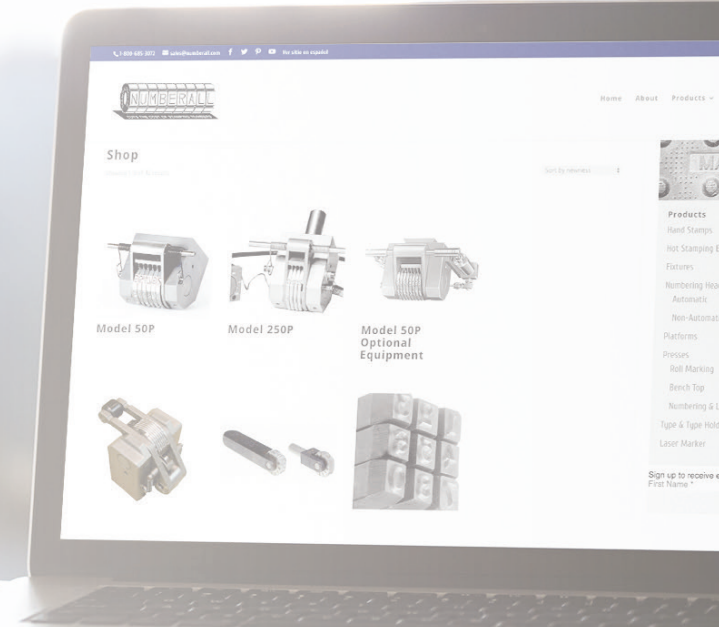
A sample plate or blueprint is required for a factory quote along with the shank and clearances of your press.



JOIN AN EXCLUSIVE GROUP OF MANUFACTURING PROFESSIONALS!

Visit numberall.com to sign up for our monthly newsletter, where you'll receive special offers, useful how-tos, informative blogs, helpful infographics, and more from Numberall Stamp & Tool!

Recent newsletter topics have covered choosing the right method for marking firearms, determining which metal marking method you should use for your product, finding the right marking device with our product chooser, and much more.



SUPER QUALITY STEEL TYPE

Numberall's steel type is engraved for accuracy, strength, and alignment. Made of high-grade tool steel, the type is precision heat-treated for severe usage. The thickness of standard super quality steel type is equivalent to the character size (except 1/32" type). For example, 1/8" characters are engraved on blanks that are 1/8" wide making 8 pieces of 1/8" type 1" long. However, condensed or extra-condensed characters are available to shorten space requirements. Other character styles may require extra wide blanks. Numberall also manufactures type to custom dimensions. The above characteristics of our standard type hold true for custom type. Please contact us for a consultation.



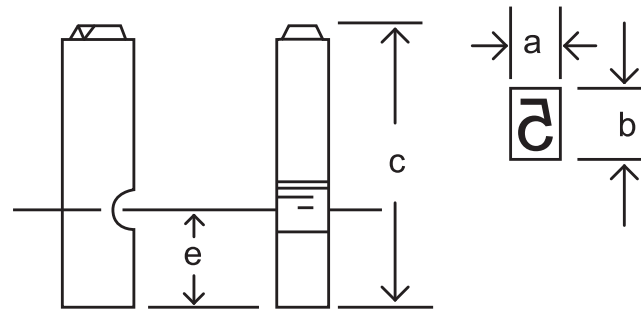
- 5 1/16"
- 5 3/32"
- 5 1/8"
- 5 5/32"
- 5 3/16"
- 5 1/4"
- 5 5/16"
- 5 3/8"

COMPATIBILITY

Standard stocked steel type is notched to be used in Numberall's Model 22, Model 23, and Model 24 Type Holders. The notch also serves as a locating mark for proper character orientation in holders where a set screw is used instead of a type retaining pin.

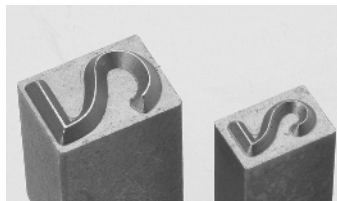
STANDARD STOCKED TYPE SPECS

The following chart details the information on standard stocked type. Refer to Character Styles & Specifications on page 47 for standard character styles.

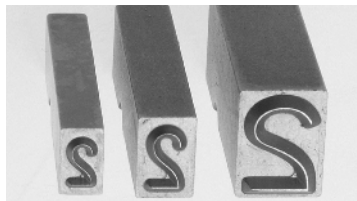


Standard Straight Steel Type with Notch

TYPE SIZES:



- 1/32" Character Size
- 1/16" Character Size
- 3/32" Character Size
- 1/8" Character Size
- 5/32" Character Size



- 3/16" Character Size
- 1/4" Character Size
- 5/16" Character Size
- 3/8" Character Size
- 1/2" Character Size

STANDARD BODY DIMENSIONS

Character Size	a	b	c	Notch Size (radius)	e
1/32"	1/16"	1/4"	7/8"	1/16"	5/16"
1/16"	1/16"	1/4"	7/8"	1/16"	5/16"
3/32"	3/32"	1/4"	7/8"	1/16"	5/16"
1/8"	1/8"	1/4"	7/8"	1/16"	5/16"
5/32"	5/32"	1/4"	7/8"	1/16"	5/16"
3/16"	3/16"	5/16"	1 1/4"	3/32"	7/16"
1/4"	1/4"	3/8"	1 1/4"	3/32"	7/16"
5/16"	5/16"	7/16"	1 1/4"	3/32"	7/16"
3/8"	3/8"	1/2"	1 1/4"	3/32"	7/16"
1/2"	1/2"	5/8"	1 1/4"	3/32"	7/16"

Note: Type can be engraved with any character, symbols, or styles. Contact factory for pricing and availability. Consult our Length of Impression Gauge, included with this catalog, to determine character size required and associated Length of Impression.



CHARACTER QUANTITY CHART

Numberall's steel type can be purchased in individual pieces or in fonts. A font is a set of multiple type pieces, which may include letters, numbers, symbols, and blanks. Please refer to the Character Quantity Chart below to identify which characters and how many of each are included in the fonts. The 3A Font has 106 pieces and 5A Font has 158 pieces.

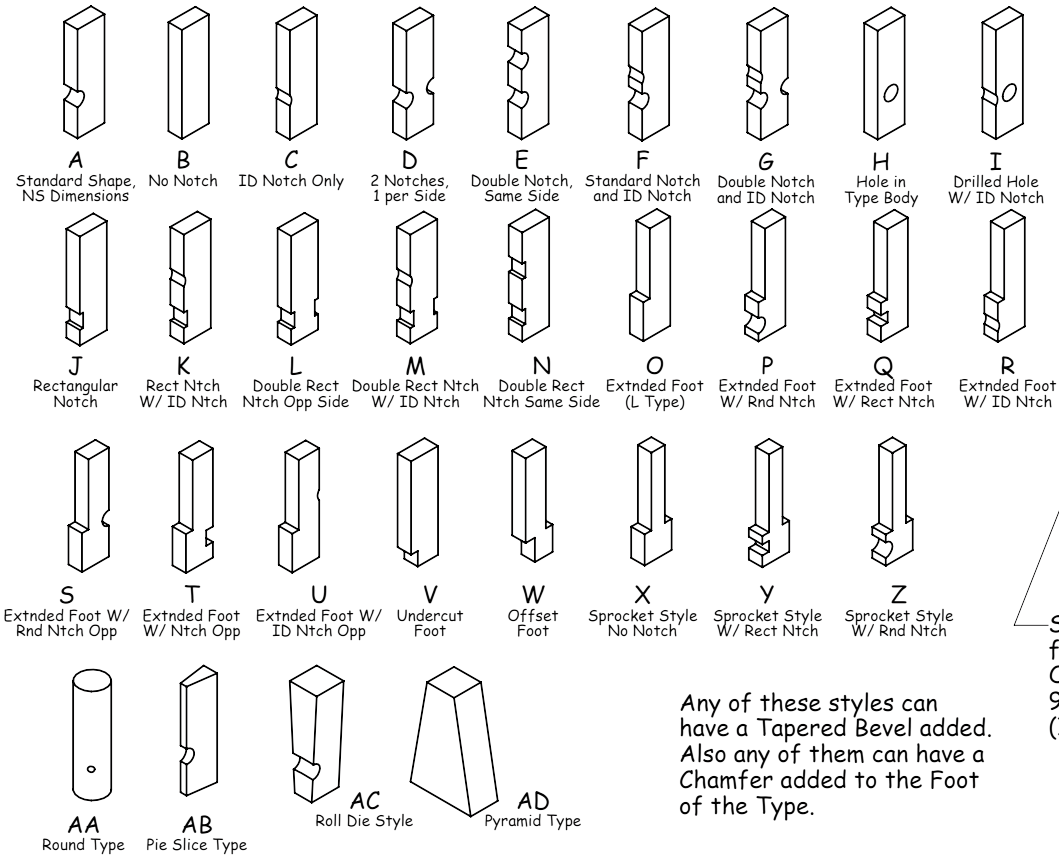
Letters	Font 3A	Font 5A	Letters	Font 3A	Font 5A	Figures	Font 3A	Font 5A	Symbols, Etc.	Font 3A	Font 5A
A	3	5	N	3	4	1	2	3	.	2	4
B	3	5	O	3	5	2	2	3	/	2	2
C	3	5	P	3	4	3	2	3	-	2	2
D	3	4	Q	2	2	4	2	3	&	1	2
E	3	5	R	3	5	5	2	3	\$	1	0
F	3	4	S	3	5	6	2	3	'	1	2
G	3	5	T	3	5	7	2	3	"	0	2
H	3	5	U	2	3	8	2	3	,	0	2
I	3	5	V	2	2	9	2	3	Blanks	6	6
J	2	3	W	3	4	0	2	3			
K	3	5	X	2	2						
L	3	4	Y	2	3						
M	3	5	Z	2	2						

FREE DELUXE TYPE BOX

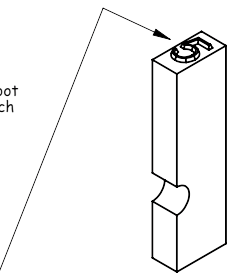
With each order placed for a Model 23 Type Holder or 3A or 5A Type Font, a Deluxe Wooden Type Box and magnet are supplied. The Deluxe Box aids in organizing Numberall's super quality steel type. The type box is designed with a separate compartment for each character, allowing for easy storage. A handy magnetized tool is also included for handling type pieces and easy removal. The box has a hinged lid with clasp, as well as room for most type holders. The No. 1 small-size box is used for type up to 5/32". The No. 2 large-size is used for all larger type. Please note that this is not a "kit." A single Type Box and magnet are included when ordering a Model 23 and/or the 3A or 5A Type Font.



CUSTOM SPECIAL STEEL TYPE STYLES

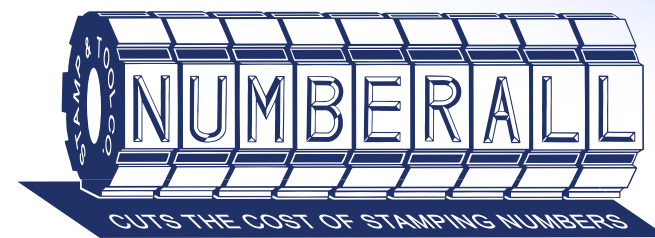


Style	Note
H	Utility Style
J	Aranco Style
O	Jones Style/ Markem
T	Markem Style
W	Kwik-Lok
X	T-Type
Y	Markem Style
AC	Reverse Wedge
AD	Wedge Type



Standard Character Orientation for all Styles. Specify Different Orientations by Angle, E.G. 90°, 180°, 270° (In Clockwise Rotation)

Any of these styles can have a Tapered Bevel added. Also any of them can have a Chamfer added to the Foot of the Type.



WWW.NUMBERALL.COM



SCAN QR CODES WITH YOUR SMART DEVICE TO VIEW ONLINE PRODUCT DEMOS

OPTIONAL HOT STAMPING EQUIPMENT

Numberall produces a vast selection of marking equipment that can be equipped for hot stamping. Numberall's Models 50P, 70, 80, 83, 85 Numbering Heads and Model 23 Type Holder, due to their hot stamping capabilities and press style shank, are thereby referred to as Models 250P, 270P, 280P, 283P, 285P, and 223P, respectively. A marking device equipped with Hot Stamping Equipment can easily be used in one of Numberall's presses. The device can also be mounted on the end of pneumatic or hydraulic cylinders or used with another manufacturer's press.

MODEL 270P ▶



BRANDING



Branding is an application that requires a part code or serial number with no color (decorating). It is usually applied in situations where it is not required that the end-user easily see the marking or when it is not feasible to use inking or paper labels. Since it is indented into the product, it will remain visible as long as the product remains intact, whereas inks or paper labels cannot survive harsh environments. The indented code stamped on typical automotive electrical connectors is a common part that is stamped by branding that can withstand such conditions.

◀ MODEL 270P WITH PROPORTIONAL TEMPERATURE CONTROL

ADDING COLOR OR DECORATION

Some applications that require the end-user to readily identify the code may add color or decoration to enhance the indented surface. This particular application requires the use of a Hot Stamping Press with foil. The foil is used as a transfer medium for adding color to the sequence. Typically, Flat Face Gothic characters are used, since a broad face facilitates the transfer of color. Numberall does not manufacture or offer a Hot Stamping Press with foil. Although, in certain situations, Numberall's Bench Marking Presses can be used with a heated marking device to "brand" the product. Any of Numberall's marking devices can be used with other manufacturers' hot stamp presses.



NECESSARY MODIFICATIONS

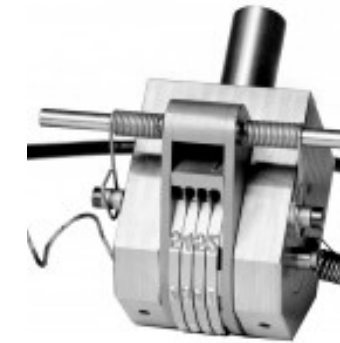
To allow for hot stamping, the marking device must first be modified in several ways. Additional clearance must be allowed for heat growth, and heating elements are provided. On the Models 250 and 270, the heating element is located in the wheel shaft. On the Models 280, 283, 285 and 223, 2 1/4" diameter heaters are installed in the frame. When using these marking devices in a Hot Stamp Press, it is recommended that the provided heaters be utilized. Particularly for the Model 250P, the heater will help the marking device to maintain a constant temperature.

It is strongly recommended the heater provided with the marking device be wired to the temperature controller of the Hot Press, or the Optional Proportional Temperature Control be purchased. Heating the marking device via the hot plate of the Hot Stamp Press requires the top of the numbering head to be much hotter than the wheels in order to transfer an adequate amount of heat. This method may bind the unit, due to uneven heat growth.



MODEL 283P WITH PROPORTIONAL TEMPERATURE CONTROL

HOT STAMPING EQUIPMENT ACCESSORIES



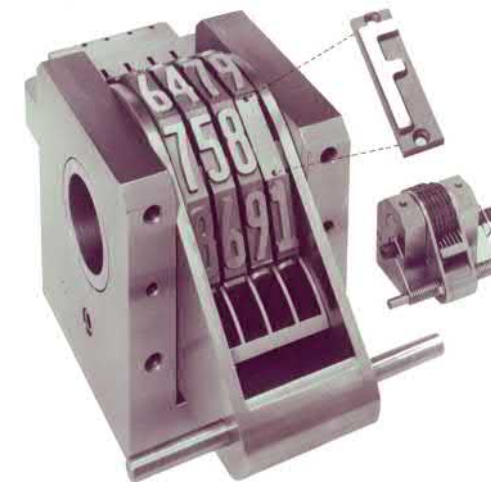
There are many accessories available for heated marking devices. If the device is used in a regular press, an insulated mounting plate must be used. An insulated mounting plate, between the press ram head and the shank, prevents any transfer of heat. The Models 283, 285, and 280 have insulated knobs, thereby allowing the operator to turn the wheels by hand.

Heating elements, a cord and switch for 110V control are included with the Hot Stamping Option. A temperature control is not included, but is highly recommended. Numberall's Hot Stamping Marking Devices are designed to operate at 350°F and below. Higher temperatures may be obtained, but it is recommended that you first check with the factory to ensure suitability. A Numbering Head that has been damaged due to overheating is not covered under warranty. There are additional accessories that may be provided, depending on the particular model that is requested.

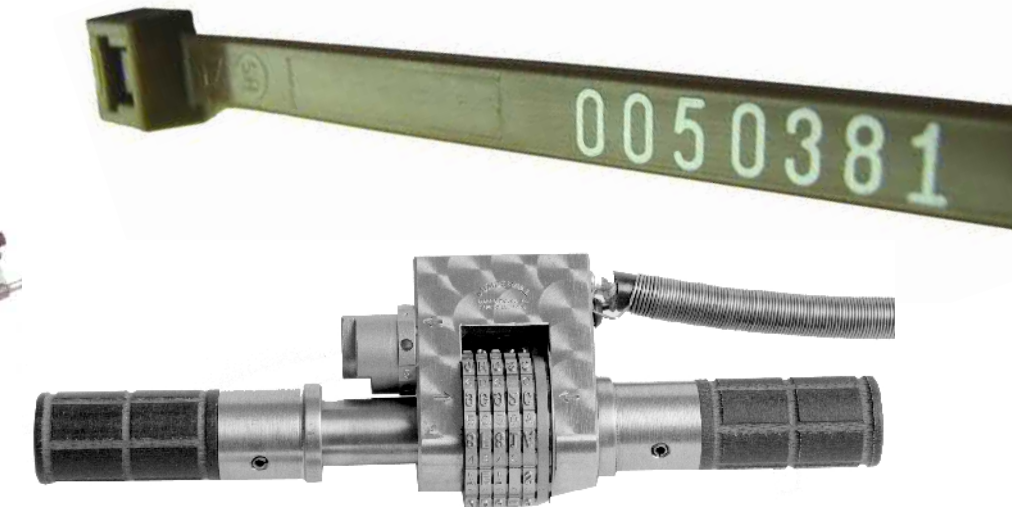
◀ MODEL 250P

MAINTENANCE

A maintenance schedule is recommended for all hot stamping devices. The hot stamping of plastics creates a residue on the device, which, when combined with high temperatures, increases the rate of oxidation. Numberall's Special High-Temperature Grease, which is supplied with all hot stamping equipment, prevents corrosion and provides lubrication. The grease is also available for purchase separately. A clean machine is a must.



KING SIZED MODEL 250P, ALONG STANDARD MODEL 250P



MODEL 283P

MODEL 60

The Model 60 offers simplified construction and low cost while delivering performance and durability. It performs similar to our Model 70, but character changes are accomplished in a different manner. Light and compact, yet durable, Model 60 is ideal for marking products like keys, nameplates, and parts constructed of mild steel or similar materials.

OPERATION

To set a desired character sequence remove the pin to free all the wheels. Push the pin back into the frame until it touches the first wheel. Then, set the first wheel to the desired character and push the pin through the first wheel to lock it in place. Repeat this same action for all wheels until the proper character sequence is obtained. Push the lock pin completely through the other side of the frame until properly seated. The pin may be inserted into the frame from either direction. With a little practice, any character sequence can be set quickly and easily.

CONSTRUCTION AND PARTS

The Model 60 is equipped with a vinyl-coated hand shank that absorbs vibration and shock occurring during the marking operation when the shank is struck with a hammer. A single tapered locking pin thrust through the frame and in the notches of the wheels holds the wheels in alignment. The wheels are meticulously engraved for accuracy, strength, and alignment. Made of high-grade alloy tool steel, the wheels are precision heat-treated for severe usage. The hand shanks are constructed of high-grade, heat-treated alloy steel and resist chipping and mushrooming.

PRODUCT SPECS

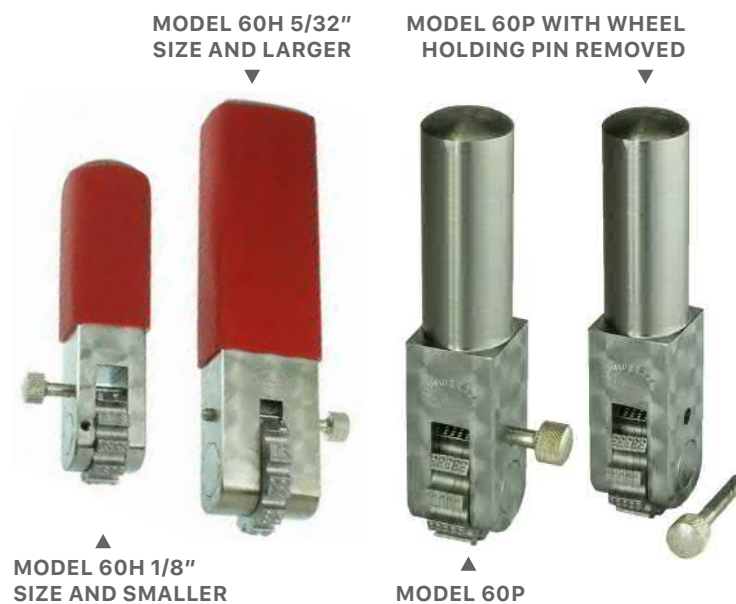
Characters on Standard Wheels* (11 division)

- Letters - A B C D E F G H I J K and blank, I omitted
- Letters - L M N O P Q R S T U V and blank, O omitted
- Figures - 1 2 3 4 5 6 7 8 9 0 and blank



*Note: Wheels can be engraved with any character, symbols, or styles. Contact factory for pricing and availability. Consult our Length of Impression Gauge, available at www.numberall.com/length-of-impession-ruler/

You may also scan the QR code to determine character size required and associated Length of Impression.



AVAILABLE CHARACTER SIZES:

- 1/16"
- 3/32"
- 1/8"
- 5/32"
- 3/16"

NUMBER OF WHEELS*: 2 TO 5

OPTIONS

Press-style shanks are also available. Please contact us for pricing and availability.



CUTS THE COST OF STAMPING NUMBERS

MODEL 70H HAND SHANK

The Model 70 is used to stamp repetitive sequences with consistently uniform character alignment and depth of impression. It has a one-piece frame and shank of heat-treated alloy steel and is also available with a standard Press Shank. Adaptable and versatile, there is virtually no limit to the range of products that can be marked with the Model 70. This press is ideal for stamping product codes, part numbers, and date codes. The same character sequence is retained after each impression is made, unless changed by the operator with the convenient spanner wrench. The versatility of the Model 70 has made it popular with many different industries.



MODEL 70P PRESS SHANK

The Model 70 Press has the same features of the Model 70 Hand, but is equipped with a standard press shank for use with most hand or power presses. Model 70P maintains a one-piece frame and shank made of heat-treated alloy steel. Adaptable and versatile, this press is ideal for stamping repetitive sequences with consistently uniform character alignment and impression depth. The same character sequence is retained after each impression is made, unless changed by the operator with the convenient spanner wrench. This makes the Model 70P ideal for marking metal parts for machinery, name tags, electronic circuit boards and parts, keys, food packaging, cardboard boxes and plastic parts. The versatility of the Model 70 has made it popular with many different industries.

CONSTRUCTION AND PARTS

Multiple wheels are held precisely in position by retaining pawls and retaining pawl springs. A retaining pawl seats in the index plate on each of the one piece wheels. This one-piece construction assures more accurate stamping than those obtainable with two-piece wheels. A pawl block further aids in maintaining wheel alignment. The wheels are engraved for accuracy, strength and alignment. Crafted from high-grade tool steel, they are precision heat treated for severe usage and long life. Unlike less rugged designs of other manufacturers, we optimize our frame designs to be compatible with the number of wheels desired by increasing the frame and leg width. All 5/32" – 1/4" machines are constructed using larger diameter wheels, wheel shafts and frames. Hand shank frames are constructed of heat-treated high-grade alloy steel to resist chipping. The hand shank is vinyl coated to absorb shock during the marking operation when the shank is struck with a hammer blow.

COMPATIBILITY

The Model 70P can be adapted to virtually any press. Our standard shank is 1" x 1-1/4" or 1" x 2". We offer a standard dovetail shank to fit Numberall's hand and power presses or Model 116 Dovetail Adapter. We can make custom round or rectangular shanks. We can omit the shank and provide tapped mounting holes or install a custom designed adapter. We also can leave the top flat so the customer can drill and tap or mount an adapter.

OPTIONS

- Hot Stamping Equipment
- All wheels indexed for direct sight reading
- Optional character styles and configurations

CHARACTERS ON STANDARD WHEELS

Wheels can be engraved with any character, symbol, or style.

- Figures 1 to 0 – and blank (12 division)
- Letters A to M and blank (14 division)
- Letters N to Z and blank (14 division)

ORDERING INFORMATION

When ordering, please specify the following:

- Number of wheels
- Character size
- Wheel arrangement (from left to right)
- Shank Requirements



Note: Please consult our Price List for the number of wheels and character sizes available. Please consult our Length of Impression Gauge to determine character size required and associated Length of Impression available at www.numberall.com/length-of-impession-ruler/.

By using shanks outlined in the Price List, the Model 70P can be easily adapted to the Model 98 and Model 47 Platforms. For presses requiring a special shank other than round, please request a factory consultation.

You may also scan the QR code above to determine character size required and associated length of impression.



MODEL 73H

MODEL 73H HEAVY DUTY

The Model 73H Heavy Duty is similar in construction and function to the Model 70, but is made specifically for heavy duty marking. By utilizing large diameter wheels and frames, the Model 73HD enables the operator to use more force without causing machine deflection. Also available with a Press Shank, the Model 73HD is readily adaptable to your marking requirements. Ideal uses for this press are those requiring large character sizes and multiple character wheels. For applications that require severe usage or high forces, Models 80, 83, and 85 are available with Model 73H Heavy Duty-type construction. Please contact us for pricing and availability.

MODEL 73P HEAVY DUTY

The Model 73P Heavy Duty is similar in construction and function to the Model 70, but is made specifically for heavy-duty marking. By utilizing large diameter wheels and frames, the Model 73P enables the operator to use more force without causing machine deflection. Also available with a one-piece Hand Shank, the Model 73P is readily adaptable to your marking requirements. Best used when marking requires large character sizes and multiple character wheels. For applications that require severe usage or high forces, Models 80, 83, and 85 are available with Model 73 Heavy Duty-type construction. Please contact us for pricing and availability.

COMPATIBILITY

The Model 73P can be adapted to virtually any press. Our standard shank is 1" diameter x 1-1/4" or 2" long. We offer a standard dovetail shank to the Model 116 Dovetail Adapter. We can make custom round or rectangular shanks. We can omit the shank and provide tapped mounting holes or install a custom designed adapter. Or we can leave the top flat so the customer can drill and tap or mount an adapter. Please request a factory quote.

OPERATION

Operation is similar to the Model 70. The same character sequence is retained after each impression is made, unless changed by the operator with the convenient spanner wrench.



MODEL 73P

OPTIONS

- Hot Stamping Equipment
- All wheels indexed for direct sight reading
- Optional character styles and configurations

CHARACTERS ON STANDARD WHEELS

Wheels can be engraved with any character, symbol, or style. Please contact us for pricing and availability.

- Figures 1 to 0 – and blank (12 division)
- Letters A to M and blank (14 division)
- Letters N to Z and blank (14 division)



ORDERING INFORMATION

When ordering, please specify the following:

- Number of wheels
- Character size
- Wheel arrangement (from left to right)
- Shank requirements

Note: Please consult our Price List for the number of wheels and character sizes available. Please consult our Length of Impression Gauge to determine character size required and associated Length of Impression available at www.numberall.com/length-of-impression-ruler/.

By using shanks outlined in the Price List, the Model 73P can be easily adapted to the Model 47 Platform.

You may also scan the QR code to determine character size required and associated Length of Impression.

Please contact us for pricing and availability.

CONSTRUCTION & PARTS

The innovative design of the machine guarantees consistently uniform character alignment and depth of impression. Multiple wheels are held precisely in position by retaining pawls and retaining pawl springs. A retaining pawl seats the index plate on each of the one-piece wheels. This one-piece construction assures more accurate stampings than those with two-piece wheels. A pawl block further aids in maintaining wheel alignment. The wheels are engraved for accuracy, strength and alignment. Crafted from high-grade tool steel, they are precision heat treated for severe usage and long life. Unlike the less-rugged designs of other manufacturers, we optimize our frame designs to be compatible with the number of wheels desired by increasing the frame and leg widths. Hand shank frames are constructed of heat-treated high-grade alloy tool steel to resist chipping. The hand shank is vinyl coated to absorb shock during the marking operation when the shank is struck with a hammer.

MODEL 80H AND 80P NUMBERING HEAD

The Model 80 differs from the Model 70 by offering a one wheel quick-change feature that is ideal for low volume consecutive numbering. The quick-change feature enables the operator to quickly change the last character in the character sequence.

OPERATION

The unit wheel is easily changed by rotating the knob on the right side of the frame. The unit wheel is indexed for direct sight reading, thus simplifying character selection. The other wheels are changed by using the convenient spanner wrench. The wheels do not need to be changed frequently; for example, the tens wheel only needs changing every ten numbers with the spanner wrench.

CONSTRUCTION & PARTS

The innovative design of the machine guarantees consistently uniform character alignment and depth of impression. Multiple wheels are held in position by retaining pawls and retaining pawls springs. A retaining pawl seats the index plate on each of the one-piece wheels. The wheels are engraved for accuracy, strength and alignment. Crafted from high-grade tool steel, they are precision heat treated for severe usage and long life. Unlike less rugged designs of other manufacturers, we optimize our frame designs to be compatible with the number of wheels desired by increasing the frame and leg widths. All 1/8" machines have two knobs, whereas 5/32" and larger machines have one knob and are constructed using larger diameter wheels, wheel shafts and frames. Hand shank frames are constructed of heat-treated high-grade alloy steel to resist chipping. The hand shank is vinyl coated to absorb shock during the marking operation when the shank is struck with a hammer blow.

OPTIONS

- Hot Stamping Equipment
- All wheels indexed for direct sight reading
- Optional character styles and configurations

COMPATIBILITY

The Model 80P can be adapted to virtually any press. Our standard shank is 1" diameter x 1-1/4" or 2" long. We offer a standard dovetail shank to fit our hand and power presses or Model 116 Dovetail Adapter. We can make custom round or rectangular shanks. We can omit the shank and provide tapped mounting holes or install a custom designed adapter. We also can leave the top flat so the customer can drill and tap or mount an adapter.



*Note: *14 division wheels cannot be used in the quick-change position.*

Note: Please consult our Price List for the number of wheels and character sizes available. Please consult our Length of Impression Gauge to determine character size required and associated Length of Impression available at www.numberall.com/length-of-impression-ruler/.

You may also scan the QR code to determine character size required and associated Length of Impression.

Please contact us for pricing and availability. By using shanks outlined in the Price List, the Model 80P can be easily adapted to the Model 98 and Model 47 Platforms.



MODEL 80H



MODEL 80P WITH SPANNER WRENCH

ORDERING INFORMATION

When ordering, please specify the following:

- Number of wheels
- Character size
- Wheel arrangement (from left to right)
- Shank requirements

CHARACTERS ON STANDARD WHEELS

Wheels can be engraved with any character, symbol, or style. Please contact us for pricing and availability.

- Figures 1 to 0 – and blank (12 division)
- Letters A to L and blank (12 division), I omitted (Quick-change only)
- Letters M to X and blank (12 division), O omitted (Quick-change only)
- Letters A to M and blank (14 division*)
- Letters N to Z and blank (14 division*)



Numberall Non-Automatic Heads Comparison
www.youtube.com/watch?v=m6hzEb6AEq

MODEL 85H AND 85P NUMBERING HEAD

The Model 85 is similar to the Model 80, but offers a 2-wheel quick-change feature. The expanded quick change feature of the last two wheels enables the operator to quickly change the last two characters in the marking sequence.

OPERATION

By sliding the wheel shaft to the left and rotating the knobs, the tens wheel is quickly set. By sliding the wheel shaft to the right and rotating the knobs, the unit's wheel is quickly set. Both quick-change wheels are indexed for direct sight reading, thus simplifying the selection of the correct characters. The other wheels in the machine are changed by using the convenient spanner wrench.



Numberall Non-Automatic
Heads Comparison

www.youtube.com/watch?v=m6hzEb6AEq

CONSTRUCTION & PARTS

The innovative design of the machine guarantees consistently uniform character alignment and depth of impression. Multiple wheels are held in position by retaining pawls and retaining pawl springs. A retaining pawl seats the index plate on each of the one piece wheels. This one-piece construction assures better alignment. The wheels are engraved for accuracy, strength and alignment. Crafted from high-grade alloy tool steel, they are precision heat treated for severe usage and long life. Unlike less rugged designs of some other manufacturers, we optimize our frame designs to be compatible with the number of wheels desired by increasing the frame and leg widths. All 5/32" – 1/4" machines are constructed using large diameter wheels, wheel shafts and frames. Hand shank frames are constructed of heat-treated high-alloy steel to resist chipping. The hand shank is vinyl coated to absorb shock during the marking operation when it is struck with a hammer.

COMPATIBILITY

The Model 85 can be adapted to virtually any press. Our standard shank is 1" x 1-1/4" or 1" x 2." We offer a standard dovetail shank to fit our hand and power presses or Model 116 Dovetail Adapter. We can make custom round or rectangular shanks. We can omit the shank and provide tapped mounting holes or install a custom designed adapter. We can also leave the top flat so the customer can drill and tap or mount an adapter.

OPTIONS

- Hot Stamping Equipment
- All wheels indexed for direct sight reading
- Optional character styles and configurations



Note: Please consult our Price List for the number of wheels and character sizes available. Please consult our Length of Impression Gauge to determine character size required and associated Length of Impression available at www.numberall.com/length-of-impession-ruler/.

Please contact us for pricing and availability. By using shanks outlined in the Price List, the Model 80P can be easily adapted to the Model 98 and Model 47 Platforms.

You may also scan the QR code to determine character size required and associated length of impression.

CHARACTERS ON STANDARD WHEELS

Wheels can be engraved with any character, symbol, or style.

- Figures 1 to 0 – and blank (12 division)
- Letters A to L and blank (12 division), I omitted (Quick-change only)
- Letters M to X and blank (12 division), O omitted (Quick-change only)
- Letters A to M and blank (14 division*)
- Letters N to Z and blank (14 division*)

Note: *14 division wheels cannot be used in the quick-change position.

ORDERING INFORMATION

When ordering, please specify the following:

- Number of wheels
- Character size
- Wheel arrangement (from left to right)
- Shank requirements



MODEL 83H AND 83P NUMBERING HEAD

The Model 83 is ideal for the marking of identification numbers and letters. Its quick-change wheels offer the fastest setup possible for semi-automatic identification marking equipment. Of course, its features are best put to use when the character sequence requires frequent, random changes.

◀ MODEL 83P



OPERATION

By rotating the selector knobs to the desired wheel number, sliding the wheel shaft to contact the selector knob, and then turning the knurled knobs to rotate the wheel shaft, the proper characters are selected for the marking sequence. All wheels are indexed for direct sight reading. The operator views the sequence being marked between the two arrows on the front frame surface. This direct sight indexing results in less errors and downtime caused in determining the characters being marked.

CONSTRUCTION & PARTS

The innovative design of the machine guarantees consistently uniform character alignment and depth of impression. Multiple wheels are held precisely in position by retaining pawls and retaining pawl springs. A retaining pawl seats the index plate on each of the one piece wheels. This one-piece construction assures more accurate stamping than those with two-piece wheels. A pawl block further aids in maintaining wheel alignment. The wheels are engraved for accuracy, strength and alignment. Crafted from high-grade tool steel, they are precision heat treated for severe usage and long life. Unlike less rugged designs of other manufacturers, we optimize our frame designs to be compatible with the number of wheels desired by increasing the frame and leg widths. All 5/32" – 1/4" machines are constructed using larger diameter wheels, wheel shafts and frames. Hand shank frames are constructed of heat-treated high-alloy steel to resist chipping. The hand shank is vinyl coated to absorb shock during the marking operation when it is struck with a hammer.



COMPATIBILITY

The Model 83 can be adapted to virtually any press. Our standard shank is 1" x 1-1/4" or 1" x 2". We offer a standard dovetail shank to fit our hand and power presses or Model 116 Dovetail Adapter. We can make custom round or rectangular shanks. We can omit the shank and provide tapped mounting holes or install a custom designed adapter. We also can leave the top flat so the customer can drill and tap or mount an adapter.

OPTIONS

- Hot Stamping Equipment
- Optional character styles and configurations



Note: Please consult our Price List for the number of wheels and character sizes available. Please consult our Length of Impression Gauge to determine character size required and associated Length of Impression available at www.numberall.com/length-of-impession-ruler/.

Please contact us for pricing and availability. By using shanks outlined in the Price List, the Model 80P can be easily adapted to the Model 98 and Model 47 Platforms.

You may also scan the QR code to determine character size required and associated length of impression.

CHARACTERS ON STANDARD WHEELS

Wheels can be engraved with any character, symbol, or style.

- Figures 1 to 0 – and blank (12 division)
- Letters A to L and blank (12 division), I omitted
- Letters M to X and blank (12 division), O omitted

ORDERING INFORMATION

When ordering, please specify the following:

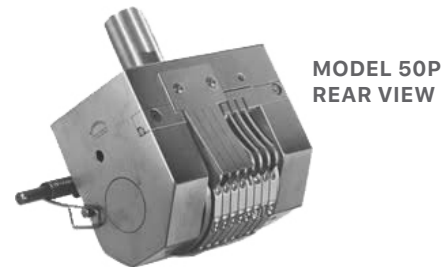
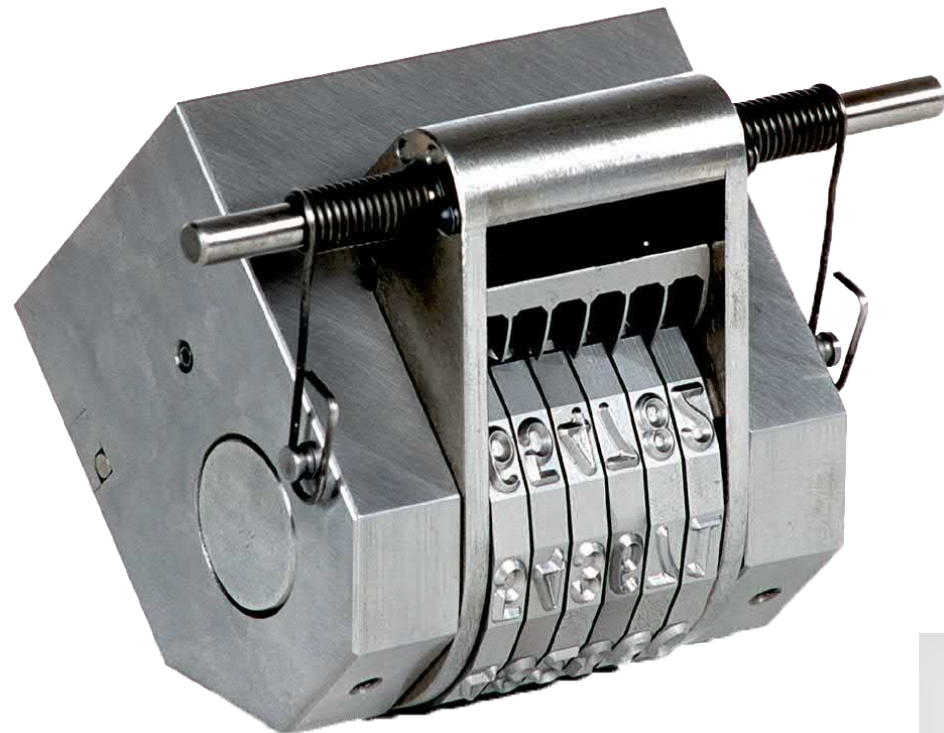
- Number of wheels
- Character size
- Wheel arrangement (from left to right)
- Shank requirements



Numberall Non-Automatic Heads Comparison

www.youtube.com/watch?v=m6hzEb6AEq

MODEL 50P



Scan to view a video demo of this model or visit:
www.youtube.com/watch?v=JGb1jqBi-BM

The Model 50P Automatic Numbering Head represents the finest marking device in the industry for rapid, accurate, and consecutive numbering. Since 1935, the Model 50P has been steadily improved to become an industry leader. We are still servicing numbering head units that are over 40 years old, a true testimonial to American quality and design.

- Ideal for rapid, accurate, consecutive marking
- Precise wheel alignment
- Zero suppression standard (to eliminate prefix zeros)

MARKING POSSIBILITIES

The Model 50P numbering head is used by many different industries. For example, pet tag manufacturers may utilize the Model 50P's hot stamping capabilities. When equipped with our optional hot stamping equipment and flat face gothic characters, mounted in a hot stamp press, a consecutive colored sequence can be obtained. The Model 50P numbering head can be modified in many ways to suit specific marking situations. See Model 50P Custom Applications on page 26 and 27 to view a few of the units that Numberall has custom built.

OPERATION

During the marking sequence, the actuating arms are extended and retracted by an external means to advance the head to the next consecutive number. A pair of coil-return springs designed for each different frame provide the proper tension for smooth actuation. The zero suppression feature allows for the omitting of leading zeros when stamping low digit numbers. The wheels are manually pre-set to the blank position between the "0" and "1" characters on the wheels. When the number is sequenced from 9 – 10, the tens wheel is indexed automatically from the blank position to the character "1." This procedure continues until all the automatic wheels have been advanced.

CONSTRUCTION & PARTS

The Model 50P is constructed with a one-piece wheel and index plate to prevent misalignment and errors that can occur with a two-piece construction. All "unit" or "ones" wheels are constructed with a thicker index plate, retaining pawl and actuating pawl prongs. All wheels are manufactured from the best heavy duty tool steel and precision heat-treated for severe usage and long life. The frame and leg widths increase accordingly with the number of wheels. The actuating pawl is geometrically designed, and the actuating arms are hard chrome plated for durability. Our exclusive pawl block aids the retaining pawl in maintaining precise wheel alignment and preventing wheel binding.



COMPATIBILITY

The Model 50P can be adapted to virtually any press. Our standard shank is between 1" x 1-1/4" and 1" x 2". We offer a standard dovetail shank to fit our hand and power presses or Model 116 Dovetail Adapter. We can make custom round or rectangular shanks. We can omit the shank and provide tapped mounting holes or install a custom designed adapter. We can also leave the top flat so the customer can drill and tap or mount an adapter. For pricing, please request a factory quote.

CHARACTERS ON STANDARD WHEELS*

- Letters (14 division manually set only) A B C D E F G H I J K L M and blank
- Letters (14 division manually set only) N O P Q R S T U V W X Y Z and blank
- Figures (10 division automatically or manually set blank half-position) – 1 2 3 4 5 6 7 8 9 0

*Note: Custom heads can be made with wheels engraved with any character, symbol, or style. Please contact us for pricing and availability.

AVAILABLE CHARACTER SIZES

- With 1.5" diameter wheels – 1/32", 3/64", 1/16", 5/64", 3/32", and 1/8"
- With 2-1/4" diameter wheels and proportionally larger frame and parts – 5/32" and 3/16"
- With 3" diameter wheels and proportionally larger frame and parts – 1/4", 5/16", and 3/8"

ORDERING INFORMATION

When ordering, please specify the following:

- Number of wheels
- Character size
- Wheel arrangement (from left to right)
- Number and location of automatic wheels
- Shank Requirements

OPTIONS

See Model 50P Optional Equipment on page 26 and 27 for details and photos:

- Hot Stamping Equipment
- Air-Tripping Attachment
- Multiple Duplication Attachment
- Proportional Temperature Control
- Insulating Mounting Plate
- All wheels indexed for direct reading
- Optional character styles and other configurations

MODEL 50P WITH AIR TRIPPING ATTACHMENT



MODEL 50P WITH AIR TRIP

The Model 50P is shown with an optional air tripping attachment and our Dovetail Shank. The air tripping attachment allows for smooth control of the actuating arms. Basically, two small air cylinders are used to move the arms that, in conjunction with the actuating pawl, rotate the wheels to the next number. A miniature roller valve, activated by the movement of the press ram, controls air to the cylinders. The mechanism works on the up-stroke of the press. Also included is an adjustable speed control valve.

Note: Air tripping attachments are highly recommended when the Model 50 is used in hand or power presses.

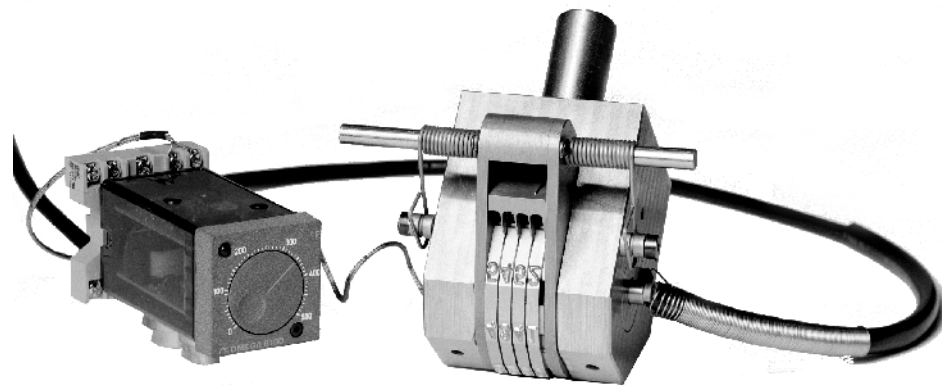
MAXIMUM NUMBER OF WHEELS*

1 to 12 with Standard Wheels (a maximum of 6 can automatically advance)



*Note: Wheels can be engraved with any character, symbols, or styles. Contact factory for pricing and availability. Consult our Length of Impression Gauge, available at: www.numberall.com/length-of-impression-ruler/

You may also scan the QR code to determine character size required and associated Length of Impression.



MODEL 250P

The Model 250P is equipped with optional hot stamping equipment and optional proportional temperature control. The hot stamping equipment provides a heating element in the wheel shaft and additional design features that are not used on cold stamping heads. When the optional proportional temperature control is used, which is highly recommended, a uniform temperature can be maintained. For further details, please visit Hot Stamping Equipment on page 6.

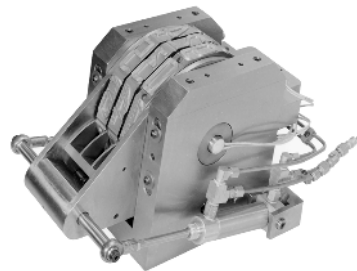
MULTIPLE DUPLICATION ATTACHMENT

This feature allows the operator to repeat the same number up to 99,999 times before allowing the Model 50P to actuate. The air tripping attachment is required for the use of this feature.



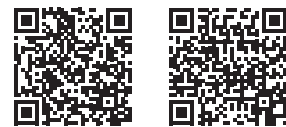
MODEL 50P CUSTOM APPLICATIONS

The Model 50P can be modified to suit specific marking situations. A few units shown on this page are examples of the custom designed Model 50P units we have built over the years. Contact our sales engineers with your requirements.



KING-SIZE MODEL 250P

This machine utilizes 1-3/4" high, flat face characters engraved on a 7" diameter wheel. The zeros are removable for either having a blank space or adding a special character to the marking sequence. This machine is equipped for hot stamping using a 5 heater system. An air-tripping attachment is optional.



Scan to view a video demo of this model or visit:
www.youtube.com/watch?v=rbS3rxBWuyg
www.youtube.com/watch?v=kxhPo9rGsx0



LONG FRAME LEG MODEL 250P

This Custom Model 250P is shown here with an extra-long frame leg. This particular head was used to hot stamp cable, with nearly 12 inches of information. The first part of the stamping incorporates a four-digit consecutive number. The extended leg holds a special logo die that is almost 12 inches long. In addition, all the characters, including the wheels, are flat face gothic and concave, to conform to the diameter of the wire being stamped.



REMOVABLE LOGO DIE MODEL 50P

A special removable logo die inserted into an extended frame leg is a custom application of this machine. A special design logo allows users to "customize" their serial numbers. This unit has sharp face characters to cold stamp metal parts. It is also equipped with our optional air-tripping attachment.



COMBINATION MODEL 51P

The Model 51P combines an automatically advancing serial numbering head with a manually advanced multiple wheel numbering machine on a supporting frame. The left side of the machine is used for selective and constant numbering. This combination in one frame minimizes deflection, which usually occurs when so many wheels are found in one marking machine. The design also allows for different character styles or sizes to be incorporated in the two sections of the machine.



EXTENDED FRAME LEG WITH REMOVABLE TYPE HOLDER MODEL 250P

An extended frame leg with a removable type holder is a custom application of the Model 250P. With a removable type holder, an additional holder can be prepared for the next set-up, thus minimizing down-time. The type holder can hold individual removable characters or a special logo. This machine is equipped with hot stamping equipment and air-tripping attachment.

MODEL 50P WITH CONCAVE LENGTH OF IMPRESSION FOR STAMPING ROUND COLLAR

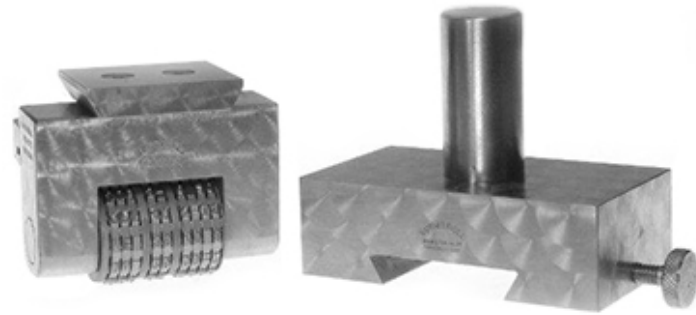


MODEL 250P WITH EXTENDED FRAME LEG FOR REMOVABLE INSERTS

EMBOSSING HEAD FOR STAMPING RAISED CHARACTERS

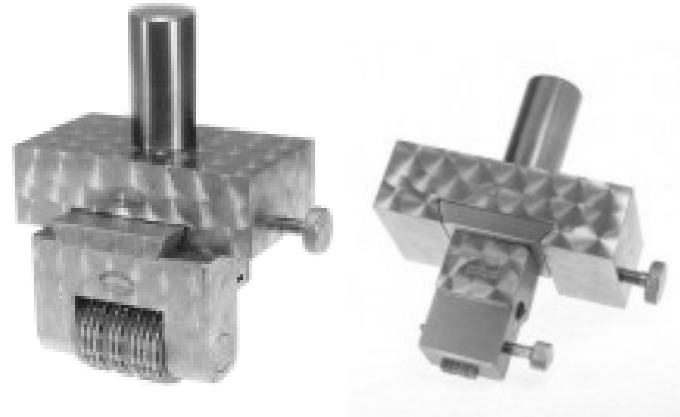


MODEL 116 DOVETAIL ADAPTER



MODEL 70P WITH DOVETAIL SHANK

MODEL 116 WITH PRESS SHANK



MODEL 116 SHOWN WITH MODEL 70P

MODEL 116 WITH MODEL 23P

The Model 116 allows quick interchanging of numbering heads (automatic or non-automatic) with type holders or any other device.

- Accurately marks details on name plates
- Saves valuable set-up time
- Cuts costs

The dovetail design on the adapter allows horizontal rather than vertical insertion. It provides easy sliding in and out of any marking device, and removal is done without disturbing press adjustment.

Some examples of machines that can be manufactured to be used with Model 116 are:

- Model 23P Type Holder
- Model 70P Non-Automatic Numbering Head
- Model 83P Selective Numbering Head
- Model 50P Automatic Numbering Head

UNIVERSAL KEY NEST FOR MODEL 40B



For applications that require many different styles of key blanks, Numberall has a Universal Key Nest fixture that will adapt to most key blank styles. It is available in two styles. The first style is smaller and can be used with Numberall's Platforms and Power Presses. The other style is larger and made on a table insert for the Model 40B Numbering & Lettering Press. Both styles use hardened steel bases for long life.

OPERATION

The keys can be inserted on the left or right side depending on blank style. The neck of the key is pushed down until the head of the key comes in contact with the stop block. The spring-loaded gate holds the key against the stop block for the stamping operation.



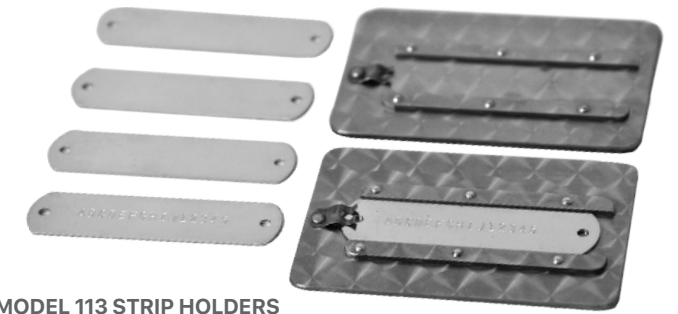
MODEL 113 STRIP HOLDER

The Model 113 Strip Holder is a fixture that is able to hold rectangular-shaped tags. It is best used with long narrow tags. A common tag type that is held by the Model 113 is a hunting dog collar tag. It is generally 3/4" x 3". The strip holder contains two rails, a combination stop, and holding clip on the left-hand side. The Model 113 can be manufactured for Numberall's Platforms (except Model 49) and Presses (except Models 301 and 301A).

Widths: 5/8", 3/4"

OPERATION

To use the Model 113, simply insert the tag from the right and slide to the left until the tag hits stop and is under the clip. Then, it will be ready for stamping.



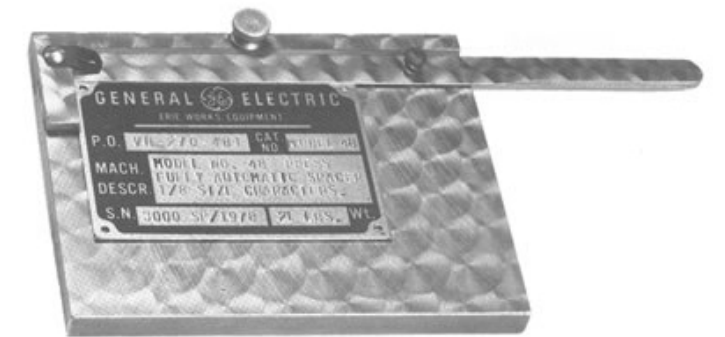
MODEL 113 STRIP HOLDERS FOR 5/8" AND 3/4" TAGS

ORDERING INFORMATION

When ordering, please specify a tag size or supply a sample tag.

MODEL 110 UNIVERSAL NAMEPLATE HOLDER

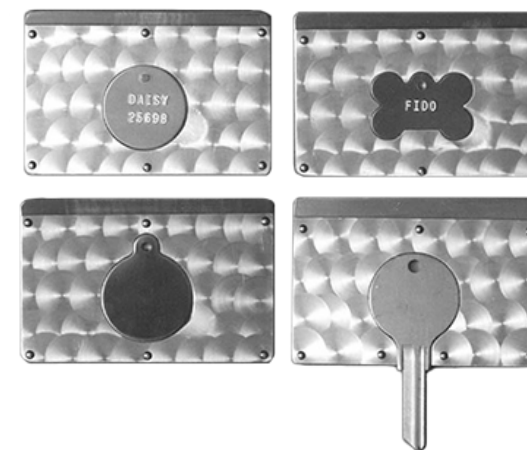
The Model 110 Universal Nameplate Holder can be used in conjunction with the Model 98 or Model 47. Model 110 provides an easy, quick clamping of a nameplate. X and Y adjustments can be made by the user. There are 3 standard sizes for nameplates as follows: 2" x 3-1/2", 2-1/2" x 4", 4" x 6". (Larger sizes can be furnished.)



CUSTOM NESTS

Nests for irregularly shaped tags can be custom manufactured. Irregular tag shapes such as circles, dog bones, etc. can be provided. A custom nest can be manufactured for Numberall's Platforms (except Model 49) and Presses (except Models 301 and 301A).

Keys are popular items that utilize nests. Basically, the shape of the tag or key is cut out of a top layer of aluminum that is then riveted to a steel base. A lip is maintained on the back edge, so that the standard clamp on the numbering and lettering presses or power presses can clamp the nest. On those tags, which are difficult to remove, a thumb cutout is built into the nest to aid in removing the tag.



ORDERING INFORMATION

Please send a sample of your tag when requesting a nest. We do not maintain a file, since various tag manufacturers' dimensions can vary.



MODEL 98 WITH MODEL 23P

MODEL 98

Adaptable to your marking needs, the heavy-duty construction of the Model 98 provides an ideal method of stamping parts with a hammer for uniform depth and alignment.

OPERATION

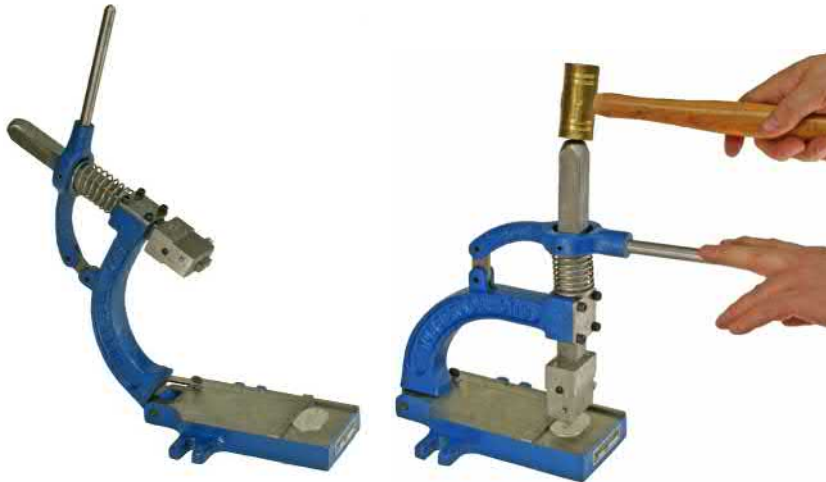
The operator pulls down the handle and strikes the shank with a hammer. Because the marking device is held squarely to the part, the stamping is properly aligned allowing for uniform depth. The Model 98 arm is hinged so that the operator can quickly view the stamping sequence. An "L" Gauge is standard and can be moved (in or out), to provide a locating point. The table area is 4" x 7". The available height under the arm is 3-7/8".

OPTIONS

- Model 110 Universal Name Plate Holder
- Model 113 Strip Holder
- Universal Key Nest
- Custom Nest
- Slotted "L" Gauge for universal key positioning

COMPATIBILITY

Models 70P, 80P, 83P and 85P Numbering Heads or the Model 23P Type Holder can be used in the Heavy Duty Model 98 Platform.

MODEL 98 WITH MODEL 23P
IN TILTED POSITIONMODEL 98 WITH MODEL 23P
IN MARKING POSITIONMODEL 47 WITH MODEL 23P AND VARIOUS
MARKING DEVICES THAT CAN BE USED

MODEL 47

The Model 47 is a platform that provides greater versatility than the Model 98. Because of the round column, the "sliding head" can be moved up or down for different size parts. The Model 47 can also be used for light punching, center punching, and other similar purposes. Round parts can be stamped using the "V" block. An "L" Gauge is standard and can be moved "in" and "out" to provide a locating point.

OPERATION

The method of operation is similar to the Model 98. The operation handle is pulled down until the marking device is in contact with the part. The shank is then struck with a hammer. This method reduces misalignment and illegible stamping by holding the marking device square with the part.

COMPATIBILITY

The Model 47 is compatible with many different marking devices that can be quickly interchanged:

- Models 70P, 80P, 83P, and 85P Numbering Heads
- 42 Character Dial and Shank
- Model 23P Type Holder
- Special Press and Trademark Dies
- Single-Wheel Rotary Stamps (shown in Model 47 photo)
- Single Letter or Figure Stamps (not shown)

OPTIONS

- Model 110 Universal Name Plate Holder
- Model 113 Strip Holder
- Universal Key Nest
- Custom Nest
- Slotted "L" Gauge for universal key positioning
- Extra-long column

MODEL 47 WITH SINGLE
WHEEL ROTARY STAMPMODEL 47 WITH SINGLE
WHEEL ROTARY STAMP IN
MARKING POSITION

MODEL 49

Compact and portable, the Model 49 provides an alternative to handheld marking devices. The frame of the Model 49 allows the marking device to lay square on the part to be stamped and stamps to be removed from the holder. A gauge at the bottom of the device facilitates accurate placement of impression and holds stamps in a vertical position for perfect impressions on large parts and panels.

OPERATION

The operator pushes down the spring loaded ring and strikes the shank with a hammer. A gauge at the base of the Model 49 facilitates accurate placement of the impression and uniform depths.

COMPATIBILITY

- Model 23P Type Holder
- Model 70P Numbering Head



MODEL 49



MODEL 40B

The Model 40B is ideal for stamping a variety of tags or flat parts made of aluminum, brass, or steel. Weighing only 40 pounds, it is portable enough to be used anywhere. It can be used to stamp dog tags, mailbox labels, and security badges.

OPERATION

To operate, simply rotate the 42-character dial to the desired character. Pull the operating handle and release. The tag has now been stamped and the carriage table has moved to the next character. After reaching the end of a line, the carriage can be returned quickly to the starting point. Spacing is accomplished by a half stroke of the operating lever. An adjustable positive depth stop ensures consistent marking depth. No experience is necessary to operate this press. After a few minutes of practice, any operator can produce neat, even work.

FRAME & COMPONENTS

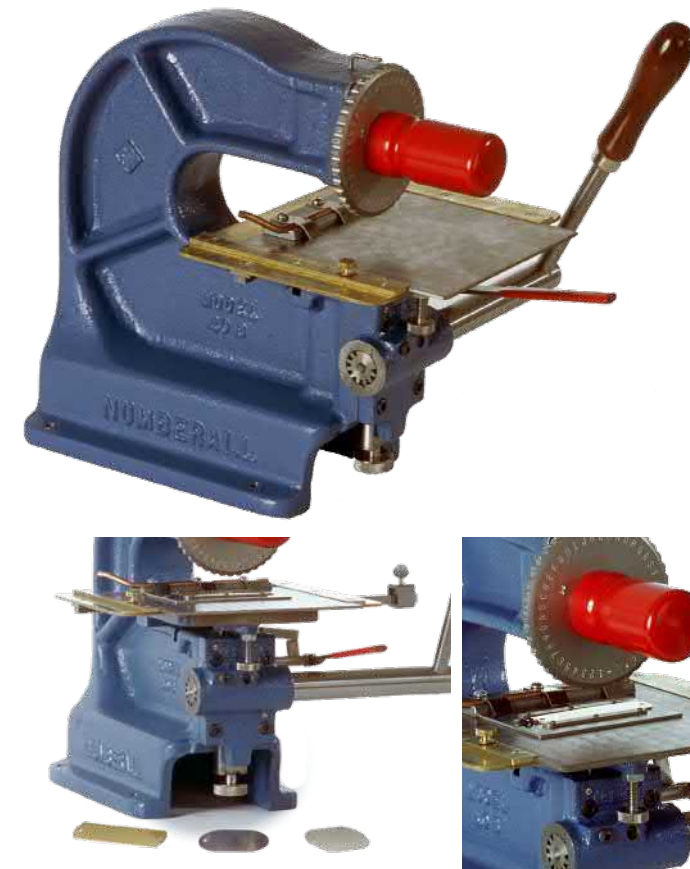
The Model 40B frame is constructed of a rigid, heavy-duty cast iron "C" type. All of the 40B's components are machined, meaning that it has no die cast parts. The table moves up towards the dial using a heavy-duty rack and pinion drive. Numberall's character dials are crafted from high-grade tool steel and precision heat treated for severe usage and long life. Character dials are engraved for accuracy, strength, and alignment. This high quality engraving allows for a clear cut impression of uniform depth. Character dials have an adjustable tension block for operator convenience. The dial's turning knob is plastic coated for comfort. Character dials can be specially engraved, as needed.

OPTIONAL FIXTURES

- Model 113 Strip Holder
- Universal Key Nest
- Custom Nest

AVAILABLE SPACING

Character Size	1/16"	3/32"	1/8"	5/32"	3/16"
Number of Characters per Inch	12.8	9.5	8.3	7.7	7.1



PRODUCT SPECIFICATIONS

Various nests, strip holders, and slides can be custom manufactured for use with the Model 40B but specifications are for standard parts only. A wider table and rack can be furnished, upon request.

Note: Different character size dials are interchangeable, but each size character requires a different size rack.

Characters on Standard Dials (42)	ABCDEFGHIJKLMNO PQRSTUVWXYZc'.- & / 1 2 3 4 5 6 7 8 9 0
Available Character Heights	1/16", 3/32", 1/8", 5/32", 3/16"
Machine Dimensions	10" wide x 18" long x 12" high
Table Size	6 x 8-1/2"
Weight	41 lbs.
Maximum Plate Size	5 3/4" wide by unlimited height
Maximum Part Thickness (using Standard 3 Finger Plate Clamp)	1/8"
Maximum Part Thickness (without clamp)	3/8"
Maximum Stamping Distance from Top of Plate	4"



Scan to view a video demo of this model or visit: www.youtube.com/watch?v=4IgpWJua4PA

MODEL 94

The Model 94 Heavy-Duty Press is ideal for indenting a variety of items with numbers and letters. A mono-character wheel with automatic character spacing makes this press easy to operate. This press is best suited for stamping codes in which each part requires a different code. Plates with unlimited height and up to 7" in width can be stamped 4-3/8" from the top of the plate.

OPERATION

The operation of the Model 94 is very simple. Depth of impression is adjustable by a dial on the bottom of the press. The table is adjusted up or down for the proper depth. The operator rotates the dial and pulls the lever to stamp the chosen character. Upon releasing the lever, the table spaces one character space. The procedure is repeated until the line is completed. A "half stroke" of the lever produces a blank space. The table insert is moveable in or out without disturbing the clamped parts. Graduated lines are stamped into the left side of the table insert in 1/16" increments. An arrow is stamped into the guide rail to be used as a reference point. There is a stop for setting the left hand margin. At the end of the line, the operator depresses the lever a half stroke. The table can then be moved to the right manually, against the margin stop.



CONSTRUCTION & PARTS

The character wheels are engraved for accuracy, strength and alignment. Crafted from high-grade tool steel, they are precision heat treated for severe usage and long life. Heavy duty cast iron construction is used throughout the machine. All parts are machined and no die cast parts are used. Various nests, strip holders and slides can be custom manufactured for use with the Model 94. Please contact us for more information.

OPTIONAL FIXTURES

- Model 113 Strip Holder
- Universal Key Nest
- Custom Nest

AVAILABLE SPACING

Different size dials are interchangeable, but each size character requires a different spacing rack.

Character Size	1/8"	5/32"	3/16"	1/4"	5/16"	3/8"
Number of Characters per Inch	8.3	7.7	7.1	5.7	4.8	4.2



Scan to view a video demo of this model or visit:
www.youtube.com/watch?v=7xkhVkfJVSk

PRODUCT SPECS

Characters on Standard Dials (42)
 A B C D E F G H I J K L M
 N O P Q R S T U V W X
 Y Z ' c . - & / 1 2 3 4 5 6
 7 8 9 0

Machine Weight 88 lbs.

Machine Shipping Weight 120 lbs.

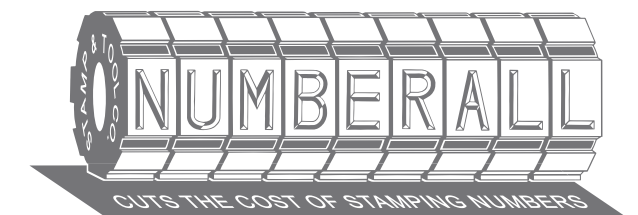
Overall Height and Width 21" high x 15" wide

Base Dimensions 12" deep x 8" wide



Order online at:

WWW.NUMBERALL.COM



MODEL 301

The Model 301 Hand-Operated or 301A Air-Operated presses are economical machines for light duty marking of round parts with an even depth of impression. Built for industrial applications, you can stamp characters up to a 1/4" in aluminum and 5/32" characters in mild steel. Despite its compact bench-top size, this press is able to incorporate oversized endplates for larger diameter parts.

OPERATION

The Model 301 is a hand-powered press. To operate it, place the round part in the adjustable holding fixture and manually pull the operating handle. The marking device (one of our Numbering Heads, Type Holders, or Marking Dies) is pulled across the part. The part rotates in the fixture as the code is stamped around the part, all in one motion. At the end of the stroke, change the part and repeat the process on the return cycle.

An adjustment knob on the sliding head dovetail provides positive marking depth adjustment. A special rectangular shank is required to adapt the marking device to the sliding head. When setting up, place a part in the fixture, and move the sliding head over the part. Turn the adjustment knob until the marking device touches the part. Move the sliding head to one side and turn the adjustment knob 1/4 of a turn. Mark a part and check for stamping depth. Move the adjustment knob in or out for proper stamping depth. Brass gibs on the dovetail and sliding head can be adjusted for wear and also tilt the marking device to correct for any part taper.

COMPATIBILITY

Numberall's Marking Devices that are compatible* with the Model 301:

- Model 23P Type Holder (with multiple lines, if required) **
- Model 70P Non-Automatic Numbering Head
- Model 50P Automatic Numbering Head
- Special Dies

Generally, with a Model 23P Type Holder and our standard adjustable holding fixture, you can mark parts from 3/8" to 1-5/8" diameter. We offer oversized endplates for more clearance by requesting the Oversize Roll Marking Machine. The first oversized endplates will give an additional 2-1/8" of clearance. Meanwhile, the second will give an additional 4-1/4" of clearance.

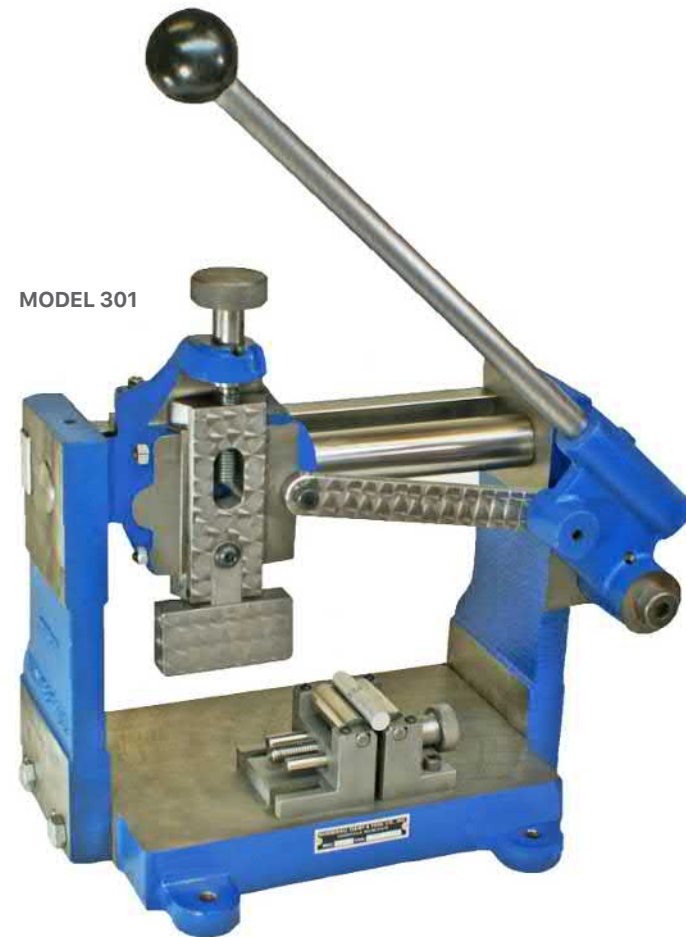
*Compatibility is based on character size, number of lines and type of material.

**It is best to obtain sample stampings for multiple line applications.

OPTIONS

- Adjustable Holding Fixture
- 1st and 2nd Oversize Endplates
- Custom Fixtures*

*Numberall has designed custom fixtures to stamp the edges of coins and medallions without marring the surfaces. We also have fixtures with interchangeable arbors for stamping hollow parts or rings. For parts with varying part diameters or stepped parts, our standard adjustable holding fixture rollers can be modified to hold the part securely when marking.



MODEL 23P AND ADJUSTABLE HOLDING FIXTURE

SPECIAL COIN HOLDING FIXTURE

Scan to view a video demo of this model or visit:
www.youtube.com/watch?v=wZ-DZfQLK10



MODEL 301A

The Model 301A Air-Operated or 301 Hand-Operated presses are ideal machines for light duty, economical marking of round parts with an even depth of impression. Built for industrial applications, you can stamp characters up to a 1/4" in aluminum and 5/32" characters in mild steel. Despite its compact bench-top size, it is able to incorporate oversized endplates for larger diameter parts.

OPERATION

The Model 301A uses an air cylinder for power and includes a control valve. It is better suited for high production applications. Once the round part is placed in the adjustable holding fixture, the operator simply actuates the air valve and the cylinder extends the marking device part. The marking device (one of our Numbering Heads, Type Holders, or Marking Dies) is pulled across the part. The part rotates in the fixture as the code is stamped around the part, all in one motion. At the end of the stroke, the cylinder stops. Remove the part, place another part in the fixture, reverse the air valve and the marking device is actuated in the opposite direction. An optional two-hand trip is available, instead of our standard valve.

An adjustment knob on the sliding head dovetail provides positive depth adjustment. A special rectangular shank is required to adapt the marking device to the sliding head. When setting up, place a part in the fixture, move the sliding head over the part. Turn the adjustment knob until the marking device touches the part. Move the sliding head to one side and turn the adjustment knob 1/4 of a turn. Mark a part and check for stamping depth. Move the adjustment knob in or out for proper stamping depth. Brass gibs on the dovetail and sliding head can be adjusted for wear and can tilt the marking device to correct for any part taper.

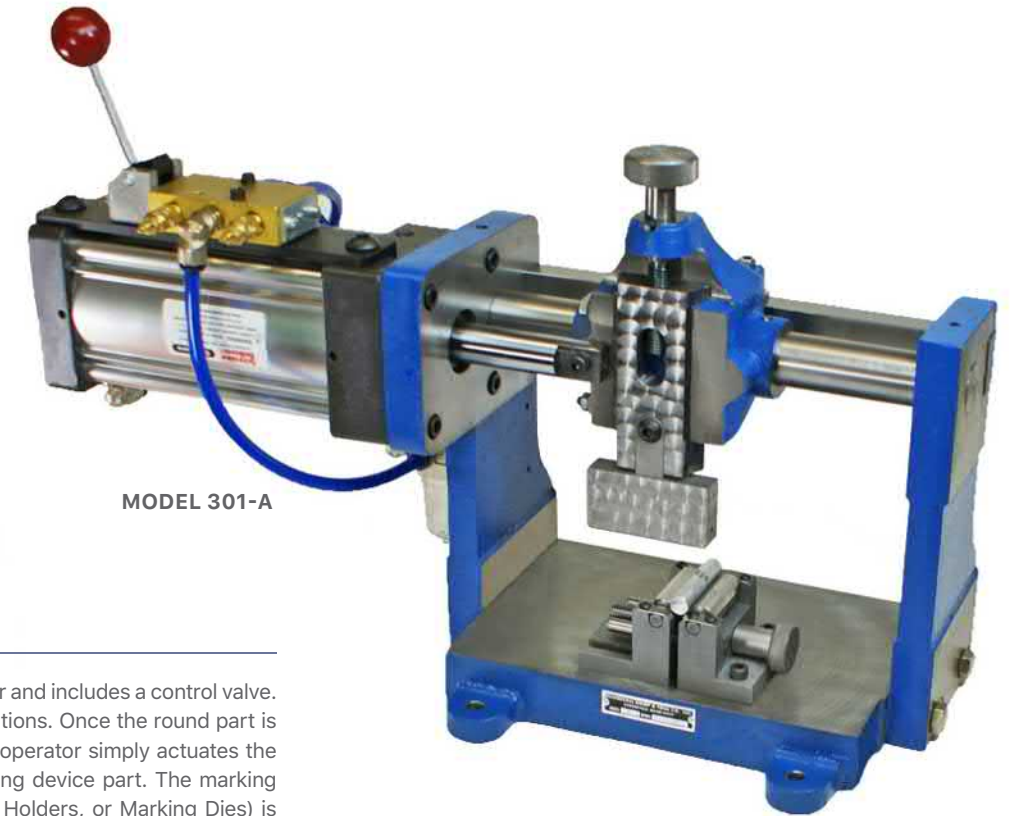
COMPATIBILITY

Numberall's Marking Devices that are compatible* with the Model 301:

- Model 23P Type Holder (with multiple lines, if required) **
- Model 70P Non-Automatic Numbering Head
- Model 50P Automatic Numbering Head
- Special Dies

MODEL 301A OPTIONS AND SPECIAL FIXTURES

Numberall has incorporated oversized endplates in its Model 301 and 301A Roll Marking Presses. Available in 2 oversizes. The maximum part diameter is increased from 1-5/8" to 3-3/4" for 1st, and up to 5-7/8" for 2nd oversize. Special fixtures and marking devices will allow larger diameters.



Generally, with a Model 23P Type Holder and our standard adjustable holding fixture, you can mark parts from 3/8" to 1-5/8" diameter. We offer oversized endplates for more clearance by requesting the Oversize Roll Marking Machine. The first oversized endplates will give an additional 2-1/8" of clearance. Meanwhile, the second will give an additional 4-1/4" of clearance.

*Compatibility is based on character size, number of lines and type of material.

**It is best to obtain sample stampings for multiple line applications.

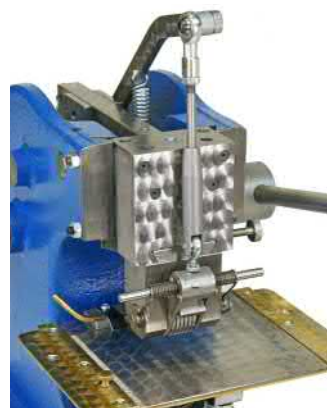
OPTIONS

- Lubricator, Filter, Regulator, & Gauge
- Two-Hand Tripping Attachment
- Adjustable Holding Fixture
- 1st and 2nd Oversize Endplates
- Custom Fixtures*
- Special Features

*Numberall has designed fixtures to stamp the edges of coins and medallions without marring the surfaces. We also have fixtures with interchangeable arbors for stamping hollow parts or rings. For parts with varying part diameters or stepped parts, our standard adjustable holding fixture rollers can be modified to hold the part securely when marking.



MODEL 136 WITH MODEL 50P



MODEL 136 WITH MODEL 50P AND TRIPPING ATTACHMENT



MODEL 136A WITHOUT MARKING DEVICE AND ADJUSTABLE TABLE



MODEL 136 WITH MODEL 50P



MODEL 136-A WITH MODEL 23P

MODEL 136 – 136A

Numberall manufactures a variety of economical bench-top presses. Bench-top mounting saves valuable floor space and keeps larger presses free for other work. The bench top presses are available in Hand-Operated (Model 136), Air-Operated (Model 136A), and Motorized (Model 137) versions. These presses are compact and easily mounted on a workbench. They are designed for marking name plates and other flat objects.

OPERATION

The Model 136 is hand-operated. By manually pulling the lever, a cam is rotated to create the stamping force. This adjusts the table so that when the cam rotates to high cam position, minimal effort is required to mark the part.

The Model 136A uses an air-cylinder to generate its power. A hand-operated lever valve is pulled toward the operator. This causes the ram to move down to stamp the part. Once stamped, the lever valve is released and the ram then moves to the home position. The Model 136A is a very simple, low maintenance press with very moving parts. In fact, we do not recommend any spare parts for this machine.

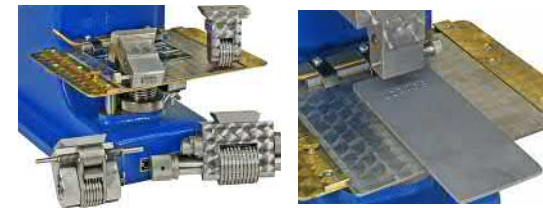
The Model 136A can also be adjusted so that any part thickness within the stroke range can be stamped without height

adjustment. By simply adjusting the air pressure, the press will stamp to a certain depth. Essentially, the press will “stall out,” but not damage the part or press components because the air pressure is lower than standard.

An acme screw and nut, attached below the cast table, regulate depth of stamping. A separate guiding rod helps align the table. By turning the acme nut you can raise or lower the table for depth adjustment. The presses feature a short, safe 3/16” stroke, negating the need for external guarding. The Model 136A can be equipped with an optional two-hand trip. Numberall’s standard dovetail shank allows quick changing of marking devices. The same dovetail is used in all of our presses as well as the Model 116 Dovetail Adapter.



MODEL 136-A WITH MODEL 23P AND SAMPLE PART ▼



▲ VARIOUS MARKING DEVICES WITH DOVETAIL SHANK TO FIT NUMBERALL’S BENCH PRESSES

CONSTRUCTION & PARTS

The Models 136, 136A, and 137 use the same base casting. Numberall’s presses have cast iron “C” frames for distortion-free stamping with a smooth, static non-impact marking force. No die cast parts are used. Many imported presses are made using round column construction with a spring release marking force, which may result in a harsh impact shock. The large quick-change dovetail ram evenly distributes the marking force across the marking device frame with minimal stress. Clearances and pressures are the same for all models.

COMPATIBILITY

A variety of marking devices can be installed in the presses, depending on part thickness and character capacity requirements.

MAXIMUM PART THICKNESS CHART

Depicts the maximum allowable part thickness, based on the marking device and character size. The total clearance under the ram is 3-3/4”, but can be modified for more; contact the factory for availability and pricing.

Marking Device	Maximum Opening
Model 23P (up to 5/32” character)	1-5/8”
Model 23P (3/16” to 1/4” character)	1-1/4”
Model 70P (up to 1/8” character)	1-9/16”
Model 70P (3/16” to 1/4” character)	1”
Model 50P (up to 1/8” character)	1-9/16”
Model 50P (5/32” and 3/16” character)	1/2”

Note: For the Maximum Part Thickness Chart, any Numbering Machine or Type Holder not listed cannot be used in the above presses.

CHARACTER CAPACITY CHART

Depicts the maximum number of characters that can be stamped during each impression. These recommendations can be exceeded in many cases. The hardness of a material will affect stamping results.

Character Size	Steel RC 30	Mild Steel	Soft Brass	Aluminum 1100 H26
1/4	2	2	4	12
3/16	2	4	5	16
5/32	3	5	8	30
1/8	4	6	13	40
3/32	4	7	15	50
1/16	6	11	24	80

Note: The Character Capacity Chart is based upon the maximum number of characters for a legible impression (.002”-.003” depth).

OPTIONS

- Tripping Attachment (for use with the Model 50P only)
- Adjustable Table (for in-out and left-right movement of table)
- Filter, Lubricator, Regulator, & Gauge (FLR&G) (for Model 136A only)
- Model 113 Strip Holder
- Universal Key Nest
- Custom Nest

PRODUCT SPECS

	Hand	Air
Bench Space Depth	14”	22”
Bench Space Width	11”	14”
Bench Space Height	20”	14-1/2”
Weight	65 lbs.	80 lbs.
Throat Depth	2-1/2”	2-1/2”
Vertical Table Adjustment	2”	2”
Clearance between ram and table (when adjusted down)	3-3/4”	3-3/4”

Scan to view a video demo of this model or visit: <https://youtu.be/oZy20CMLjIQ>





MODEL 137

Numberall manufactures a variety of economical bench-top presses. Bench-top mounting saves valuable floor space and keeps larger presses free for other work. The bench-top presses are available in hand power (Model 136), air power (Model 136A) and motorized (Model 137) versions. These presses are compact and easily mounted on a workbench. They are designed for quickly marking name plates and other flat objects.

OPERATION

The Model 137 is a motorized press. It requires 120 volts AC electricity, so it can be used anywhere there is an outlet. It utilizes a 1/4 horsepower electric motor to drive a worm gear reducer. The clutch and cam mechanism is a design that has been proven effective through many years of service. Its operation is simple. The operator moves the operating lever down and the press cycles. With the optional Single Stroke Control, the press will only cycle once until the lever is released and actuated again. Without the Single Stroke Control, the press will continually cycle until the lever is released. Motorized operation reduces operator's fatigue.

An acme screw and nut below the cast table regulate depth of stamping. A separate guiding rod helps align the table. By turning the acme nut you can raise or lower the table for depth adjustment.

The presses feature a short, safe 3/16" stroke, negating the need for external guarding. Numberall's standard dovetail shank allows quick changing of marking devices. The same dovetail is used in all of our presses as well as the Model 116 Dovetail Adapter.

CONSTRUCTION & PARTS

The Models 136, 136A and 137 use the same base casting. Numberall's presses have cast iron "C" frames for distortion-free stamping with a smooth, static non-impact marking force. No die cast parts are used. Many imported presses are made using round column construction with a spring release marking force, which may result in a harsh impact shock. The large quick-change dovetail ram evenly distributes the marking force across the marking device frame with minimal stress. Clearances and pressures are the same for each model.

COMPATIBILITY

A variety of marking devices can be installed in the presses, depending on part thickness and character capacity requirements.



MAXIMUM PART THICKNESS CHART

Depicts the maximum allowable part thickness, based on the marking device and character size. The total clearance under the ram is 3-3/4", but can be modified for additional opening; contact the factory for availability.

Marking Device	Maximum Opening
Model 23P (up to 5/32" character)	1-5/8"
Model 23P (3/16" to 1/4" character)	1-1/4"
Model 70P (up to 1/8" character)	1-9/16"
Model 70P (3/16" to 1/4" character)	1"
Model 50P (up to 1/8" character)	1-9/16"
Model 50P (5/32" and 3/16" character)	1/2"

Note: For the Maximum Part Thickness Chart, any Numbering Machine or Type Holder not listed cannot be used in the above presses.

OPTIONS

- Tripping Attachment (for use with the Model 50P only)
- Adjustable Table (for in-out and left-right movement of table)
- Filter, Lubricator, Regulator, & Gauge (FLR&G) (for Model 131A only)
- Model 113 Strip Holder
- Universal Key Nest
- Custom Nest

CHARACTER CAPACITY CHART

Depicts the maximum number of characters that can be stamped during each impression. These recommendations can be exceeded in many cases. The hardness of a material will affect stamping results.

Character Size	Steel RC 30	Mild Steel	Soft Brass	Aluminum 1100 H26
1/4	2	2	4	12
3/16	2	4	5	16
5/32	3	5	8	30
1/8	4	6	13	40
3/32	4	7	15	50
1/16	6	11	24	80

PRODUCT SPECS

Bench Space	24" Deep, 16" Wide, 16" High
Weight	110 lbs.
Throat Depth	2-1/2"
Clearance between Ram & Table (when adjusted down)	3-3/4"
Vertical Adjustment of Table	2"
Short Safe Stroke	3/16"
Mounting of Numbering Heads, Type and Holders	Dovetail



MODEL 137 WITH UNIVERSAL KEY NEST AND VARIOUS MARKING DEVICES, KEY NESTS AND CORE NESTS

Note: The Character Capacity Chart is based upon the maximum number of characters for a legible impression (.002"-.003" depth).

MODEL 131 – 131A

Numberall manufactures a variety of economical bench top presses. Bench-top mounting saves valuable floor space and keeps larger presses free for other work. The bench-top presses are available in Hand-Operated (Model 131), Air-Operated (Model 131A), and Motorized (Model 133) versions. These presses are compact and can be easily mounted on a workbench. They are designed for marking name plates and other flat objects.

OPERATION

The Model 131 is hand-operated. By manually pulling the lever, a cam is rotated to create the stamping force. The table would be adjusted so that when the cam rotates to high cam position, minimal effort is required to mark the part.

The Model 131A uses an air-cylinder to generate its power. A hand-operated lever valve is pulled toward the operator. This causes the ram to move down to stamp the part. Once stamped, the lever valve is released and the ram then moves to the home position. The Model 131A is a very simple, low maintenance press with few moving parts. In fact, we do not recommend any spare parts for this machine.

The Model 131A can be adjusted so that any part thickness within the stroke range can be stamped without height adjustment. By simply adjusting the air pressure, the press will stamp to a certain depth. Essentially the press will "stall out," but not damage the part or press components because the air pressure is lower than standard. An acme screw and nut below the cast table regulate depth of stamping. A separate guiding rod helps align the table. By turning the acme nut you can raise or lower the table for depth adjustment.

The presses feature a short, safe 3/16" stroke, negating the need for external guarding. The Model 131A can be equipped with an optional two-hand trip. Numberall's standard dovetail shank allows for quick changing of marking devices. The same dovetail is used in all of our presses as well as the Model 116 Dovetail Adapter.

CONSTRUCTION & PARTS

The Models 131, 131A and 133 all use the same base casting. Numberall's presses have cast iron "C" frames for distortion-free stamping with a smooth, static non-impact marking force. No die cast parts are used. Many imported presses are made using round column construction with a spring release marking force, which may result in a harsh impact shock. The large quick-change dovetail ram evenly distributes the marking force across the marking device frame with minimal stress. Clearances and pressures are the same for all models.



MODEL 131



COMPATIBILITY

A variety of marking devices can be installed in the presses, depending on part thickness and character capacity requirements.

MAXIMUM PART THICKNESS CHART

Depicts the maximum allowable part thickness, based on the marking device and character size. The total clearance under the ram is 3-3/4", but can be modified for more; contact the factory for availability and pricing.

Marking Device	Maximum Opening
Model 23P (up to 5/32" character)	1-5/8"
Model 23P (3/16" to 1/4" character)	1-1/4"
Model 70P (up to 1/8" character)	1-9/16"
Model 70P (3/16" to 1/4" character)	1"
Model 50P (up to 1/8" characters)	1-9/16"
Model 50P (5/32" and 3/16" character)	1/2"

Note: For the Maximum Part Thickness Chart, any Numbering Machine or Type Holder not listed cannot be used in the above presses.

CHARACTER CAPACITY CHART

Depicts the maximum number of characters that can be stamped during each impression. These recommendations can be exceeded in many cases. The hardness of a material will affect stamping results.

Character Size	Steel RC 30	Mild Steel	Soft Brass	Aluminum 1100 H26
1/4	3	5	7	12
3/16	4	7	11	16
5/32	6	8	17	36
1/8	9	12	25	48
3/32	10	13	30	63
1/16	12	20	48	96

Note: The Character Capacity Chart is based upon the maximum number of characters for a legible impression (.002"-.003" depth).

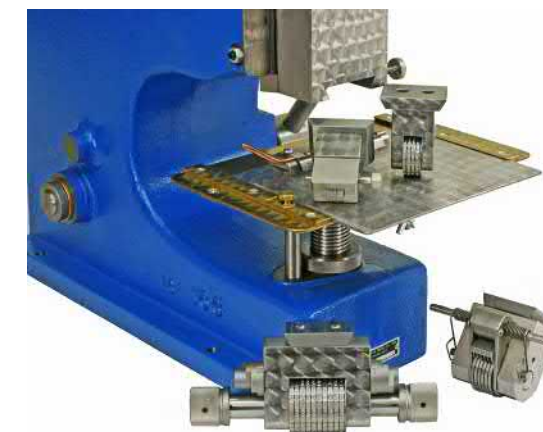
PRODUCT SPECS

Feature	Hand	Air
Bench Space Depth	24"	24"
Bench Space Width	14"	12"
Bench Space Height	27"	17-1/2"
Weight	125 lbs.	135 lbs.
Throat Depth	6"	6"
Vertical Table Adjustment	2"	2"

Clearance between ram and table (when adjusted down)	3-3/4"	3-3/4"
--	--------	--------

OPTIONS

- Tripping Attachment (for use with the Model 50P only)
- Adjustable Table (for in-out and left-right movement of table)
- Filter, Lubricator, Regulator, & Gauge (FLR&G) (for Model 131A only)
- Model 113 Strip Holder
- Universal Key Nest
- Custom Nest



MODEL 131 WITH VARIOUS MARKING DEVICES WITH DOVETAIL SHANKS



MODEL 131-A



MODEL 131 WITH OPTIONAL ADJUSTABLE TABLE

MODEL 133

Numberall manufactures a variety of economical bench-top presses. Bench-top mounting saves valuable floor space and keeps larger presses free for other work. The bench top presses are available in hand powered (Model 131), air powered (Model 131A) and motorized (Model 133) versions. These presses are compact and can be easily mounted on a workbench. They are designed for quickly marking name plates and other flat objects.

OPERATION

The Model 133 is a motorized press. It requires 120 volts AC electricity, so it can be used anywhere there is an outlet. It utilizes a 1/2 horsepower electric motor to drive a worm gear reducer. The clutch and cam mechanism is a design that has been proven effective through many years of service. Its operation is simple. The operator moves the operating lever down and the press cycles. With the optional Single Stroke Control, the press will only cycle once until the lever is released and actuated again. Without the Single Stroke Control, the press will continually cycle until the lever is released. Motorized operation reduces operator's fatigue.

An acme screw and nut, attached below the cast table, regulate depth of stamping. A separate guiding rod helps align the table. By turning the acme nut you can raise or lower the table for depth adjustment.

The presses feature a short, safe 3/16" stroke, negating the need for external guarding. Numberall's standard dovetail shank allows quick changing of marking devices. The same dovetail is used in all of our presses as well as the Model 116 Dovetail Adapter.

COMPATIBILITY

A variety of marking devices can be installed in the presses, depending on part thickness and character capacity requirements.



MODEL 133

CONSTRUCTION & PARTS

The Models 131, 131A and 133 use the same base casting. Numberall's presses are husky, cast iron "C" frames for distortion-free stamping with a smooth, static non-impact marking force. No die cast parts are used. Many imported presses are made using round column construction with a spring release marking force, which may result in a harsh impact shock. The large quick-change dovetail ram evenly distributes the marking force across the marking device frame, with minimal part and marking device stress. Clearances and pressures are the same for each model.



MAXIMUM PART THICKNESS CHART

Depicts the maximum allowable part thickness, based on the marking device and character size. The total clearance under the ram is 3-3/4", but can be modified for additional opening; contact the factory for availability.

Marking Device	Maximum Opening
Model 23P (up to 5/32" character)	1-5/8"
Model 23P (3/16" to 1/4" character)	1-1/4"
Model 70P (up to 1/8" character)	1-9/16"
Model 70P (3/16" to 1/4" character)	1"
Model 50P (up to 1/8" character)	1-9/16"
Model 50P (5/32" and 3/16" character)	1/2"

Note: For the Maximum Part Thickness Chart, any Numbering Machine or Type Holder not listed cannot be used in the above presses.

PRODUCT SPECS

Bench Space	16" Deep, 18" Wide, 18" High
Weight	175 lbs.
Throat Depth	6"
Clearance between Ram & Table (when adjusted down)	3-3/4"
Vertical Adjustment of Table	2"
Short Safe Stroke	3/16"
Mounting of Numbering Heads, Type and Holders	Dovetail

CHARACTER CAPACITY CHART

Depicts the maximum number of characters that can be stamped during each impression. These recommendations can be exceeded in many cases. The hardness of a material will affect stamping results.

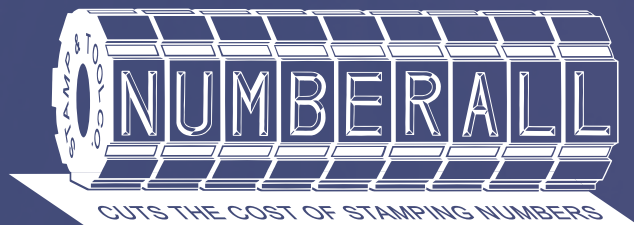
Character Size	Steel RC 30	Mild Steel	Soft Brass	Aluminum 1100 H26
1/4	3	5	7	12
3/16	4	7	11	16
5/32	6	8	17	36
1/8	9	12	25	48
3/32	10	13	30	63
1/16	12	20	48	96

Note: The Character Capacity Chart is based upon the maximum number of characters for a legible impression (.002"-.003" depth).

OPTIONS

- Tripping Attachment (for use with the Model 50P only)
- Adjustable Table (for in-out and left-right movement of table)
- Filter, Lubricator, Regulator, & Gauge (FLR&G) (for Model 131A only)
- Model 113 Strip Holder
- Universal Key Nest
- Custom Nest





P.O. Box 187, 1 High Street
Sangerville, ME 04479

Phone: (207) 876-3541
Fax: (207) 876-3566

www.numberall.com
sales@numberall.com

MADE AND
SERVICED IN USA
SINCE 1930

NUMBERALL

GENERAL PRICE LIST

SUBJECT TO CHANGE WITHOUT NOTICE
EFFECTIVE - APRIL 27, 2026

RETURN ITEMS SUBJECT TO RESTOCKING CHARGE.
OBTAIN FACTORY AUTHORIZATION.

MINIMUM ORDER \$50.00 TERMS: NET 30 CASH

STEEL HAND STAMPS			HEAVY DUTY			STANDARD STEEL HAND STAMP QUANTITY DISCOUNT RATE
SIZE	9 PIECE FIGURE SET CATALOG#	PRICE	27 PIECE LETTER SET CATALOG#	PRICE	INDIVIDUAL STAMPS (SPECIFY)	
1/32	SS-132-F	\$120.00	SS-132-AZ	\$ 356.00	\$18.00	Order Value: \$415.00 TO \$993.00 ... 10% \$994.00 TO 2223.00 ... 15% 2224.00 AND UP 20%
1/16	SS-116-F	97.00	SS-116-AZ	288.00	16.00	
3/32	SS-332-F	97.00	SS-332-AZ	288.00	16.00	
1/8	SS-18-F	97.00	SS-18-AZ	288.00	16.00	
5/32	SS-532-F	109.00	SS-532-AZ	326.00	16.00	
3/16	SS-316-F	116.00	SS-316-AZ	348.00	18.00	
1/4	SS-14-F	135.00	SS-14-AZ	411.00	24.00	
5/16	SS-516-F	165.00	SS-516-AZ	496.00	27.00	
3/8	SS-38-F	194.00	SS-38-AZ	582.00	30.00	
1/2	SS-12-F	307.00	SS-12-AZ	912.00	47.00	

SINGLE WHEEL ROTARY STAMPS			WITH 1/2" ROUND PRESS SHANK - Add \$90.00 per stamp.			
SIZE	12 CHARACTERS FIGURE STAMP CAT.#	PRICE	14 CHARACTERS LETTER STAMP (A-M) CAT#	PRICE	14 CHARACTERS LETTER STAMP (N-Z) CAT#	PRICE
1/16	RS-116-F	\$170.00	RS-116-AM	\$211.00	RS-116-NZ	\$211.00
3/32	RS-332-F	163.00	RS-332-AM	196.00	RS-332-NZ	196.00
1/8	RS-18-F	163.00	RS-18-AM	196.00	RS-18-NZ	196.00
5/32	RS-532-F	163.00	RS-532-AM	196.00	RS-532-NZ	196.00
3/16	RS-316-F	163.00	RS-316-AM	196.00	RS-316-NZ	196.00
1/4	RS-14-F	220.00	RS-14-AM	272.00	RS-14-NZ	272.00
5/16	RS-516-F	278.00	RS-516-AM	343.00	RS-516-NZ	343.00
3/8	RS-38-F	337.00	RS-38-AM	421.00	RS-38-NZ	421.00
28 CHARACTERS LETTER SET (A-M AND N-Z) 2 SHANKS 2 WHEELS		PRICE	40 CHARACTERS DELUXE SET (A-M AND N-Z 0-9) 3 SHANKS 3 WHEELS		PRICE	EXTRA WHEELS EACH
1/16	RS-116-AZ	\$422.00	RS-116-D	\$592.00	\$136.00	\$175.00
3/32	RS-332-AZ	392.00	RS-332-D	555.00	124.00	156.00
1/8	RS-18-AZ	392.00	RS-18-D	555.00	124.00	156.00
5/32	RS-532-AZ	392.00	RS-532-D	555.00	124.00	156.00
3/16	RS-316-AZ	392.00	RS-316-D	555.00	124.00	156.00
1/4	RS-14-AZ	544.00	RS-14-D	764.00	169.00	221.00
5/16	RS-516-AZ	686.00	RS-516-D	964.00	218.00	282.00
3/8	RS-38-AZ	842.00	RS-38-D	1179.00	259.00	342.00
ROTARY DATE STAMP MODEL 36B		PRICE \$668.00	WHEELS ONLY \$361.00 EACH			

Model 60 - Multi-Wheel Numbering Machine					
	SIZE 1/16	3/32 OR 1/8	5/32	3/16	
2 wheels	\$839.00	\$796.00	1087.00	1131.00	
3 wheels	1065.00	1007.00	1339.00	1402.00	
4 wheels	1294.00	1214.00	1586.00	1672.00	
5 wheels	1520.00	1428.00	1837.00	1946.00	
Standard	Figure 247.00	Letter 234.00	278.00	303.00	
Wheels	288.00	275.00	319.00	343.00	
Only					
Machine Price: For Sharp Face Gothic Characters with Standard Wheels					

NUMBERALL

MODEL 73 H.D. Numbering Machine

Prices are for Sharp Face Gothic style figure, Machines equipped with Standard Press Shank, for Standard Hand Shank add \$311.00.

CHARACTER SIZE

NUMBER OF WHEELS	5/32		3/16		1/4		5/16		3/8	
	CODE#	PRICE	CODE#	PRICE	CODE#	PRICE	CODE#	PRICE	CODE#	PRICE
3							73-3516	\$3455.00	73-338	\$4055.00
4							73-4516	4064.00	73-438	4728.00
5							73-5516	4733.00	73-538	5497.00
6							73-6516	5456.00	73-638	6386.00
7					73-714	\$4590.00	73-7516	6262.00	73-738	7387.00
8					73-814	5195.00	73-8516	7132.00	73-838	8527.00
9	73-9532	\$5061.00	73-9316	\$5380.00	73-914	5845.00				
10	73-10532	5645.00	73-10316	5897.00	73-1014	6568.00				
11	73-11532	6218.00	73-11316	6476.00	73-1114	7355.00				
12	73-12532	6850.00	73-12316	7105.00	73-1214	7621.00				
13	73-13532	7529.00	73-13316	7779.00						
14	73-14532	8260.00	73-14316	8556.00						

Standard Wheels	Figure	\$518.00	\$546.00	\$588.00	\$633.00	\$679.00
Only	Letter	598.00	626.00	668.00	713.00	759.00

MODEL 22 - Type Holder for Light duty Marking

Price 229.00

MODEL 23H - MODEL 23P Type Holders

Prices are for Single Line Holders with Standard Press Shanks, (1" diameter by either 1 1/4" or 2" long) and include **FREE Type Box and Pencil Magnet.**
Hand Shanks include Shock Absorbing Plastic Coating.

CAPACITY

SIZE	4 PIECES	6 PIECES	8 PIECES	10 PIECES	12 PIECES	14 PIECES	16 PIECES
TYPE	TYPE	TYPE	TYPE	TYPE	TYPE	TYPE	TYPE
1/16	\$411.00	\$423.00	\$431.00	\$444.00	\$447.00	\$462.00	\$479.00
3/32	423.00	433.00	447.00	477.00	500.00	506.00	529.00
1/8	431.00	447.00	479.00	505.00	529.00	552.00	575.00
5/32	444.00	477.00	505.00	534.00	566.00	597.00	622.00
3/16	506.00	549.00	586.00	615.00	660.00	687.00	732.00
1/4	549.00	597.00	651.00	687.00	734.00	793.00	847.00
5/16	602.00	660.00	727.00	783.00	847.00	904.00	
3/8	659.00	729.00	794.00	870.00			
1/2	756.00	856.00	951.00				

Type prices are not included. **\$78.00 extra for hand shanks; 142.00 extra for non-standard press shanks** and special shanks to fit stamp holders and platforms. \$572.00 extra for special end-thrust construction and shank to fit 301 press.

MODEL 23P2 - 2 Line Holder / Model 23P3 - 3 Line Holder - Prices by quotation only.

NUMBERALL

STEEL TYPE - Super Quality Machine Engraved Steel Type - Prices for Sharp Face Gothic Style.

Prices below are per Piece of Stated Quantities.

SIZE INCHES							3A FONT		5A FONT	
	1-3	4-7	8-25	26-99	100-499	500 & more	Blanks	100 Pcs. Type 6 Blanks	152 Pcs. Type 6 Blanks	
1/32	\$24.50	\$20.65	\$18.15	\$16.55	\$14.40	\$13.30	\$7.70	\$1486.00	\$2235.00	
1/16	20.65	17.15	15.45	13.45	13.15	12.90	7.50	1360.00	2043.00	
3/32	19.20	16.30	13.85	12.95	12.15	11.30	7.00	1257.00	1888.00	
1/8	19.20	16.30	13.85	12.95	12.15	11.30	7.00	1257.00	1888.00	
5/32	20.65	17.15	15.45	13.45	13.15	12.90	7.50	1360.00	2043.00	
3/16	24.00	20.15	17.35	16.30	15.00	14.35	7.55	1545.00	2325.00	
1/4	26.95	22.70	20.15	18.15	16.80	16.50	8.25	1729.00	2603.00	
5/16	34.75	29.15	25.40	22.85	21.35	20.50	11.30	2202.00	3313.00	
3/8	40.70	33.65	29.30	26.95	25.15	24.05	12.90	2592.00	3900.00	
1/2	49.00	40.85	35.15	32.75	29.90	29.15	15.90	3085.00	4640.00	

The Best Heavy Duty High Alloy Tool Steel heat treated in controlled Atmosphere Furnaces is used in the manufacturing of all our Numbering Wheels and Type at **No Extra Cost.**

Quantity Prices on Type apply only to each size.

SPECIAL TYPE ON QUOTATION ONLY

TYPE BOXES WOOD STAINED & VARNISHED

No. 1 Small Size: \$101.00 each

Pencil Magnet: \$6.00 each

No. 2 Large Size: \$114.00 each

MODEL 49 - STAMP HOLDER

Price: Holder only, without Type Holder & Plate Holder, or Multi-Wheel Numbering Machine.
SPECIAL SHANK REQUIRED ON MARKING DEVICES.

\$658.00
142.00

MODEL 98 - IMPROVED PLATFORM

Price: Platform only, without Plate Holder, Numbering Head or Type Holder.
SPECIAL SHANK REQUIRED ON MARKING DEVICES.
If slot required in "L" gauge add

\$887.00
142.00
26.00

MODEL 110 - UNIVERSAL NAME PLATE HOLDER

2 x 3-1/2" (only size that fits 45 platform)
2-1/2 x 4"
4 x 6"

\$523.00
566.00
611.00

MODEL 47 - MARKING APPARATUS

Price: Standard only without stamps (including round ram w/ shank hole)
SPECIAL SHANK REQUIRED ON NUMBERING HEADS AND TYPE HOLDERS.

\$944.00
142.00

MODEL 94 - HEAVY DUTY NUMBERING & LETTERING PRESS

CHARACTER SIZES	SHARP FACE GOTHIC	DIALS ONLY	SPACING RACK ONLY
1/8, 5/32 & 3/16	\$5670.00	\$984.00	158.00
1/4	5745.00	1059.00	
5/16	5892.00	1210.00	
3/8	6031.00	1347.00	

MODEL 301 - ROLL MARKING PRESS without fixtures..... \$4235.00
 Adjustable Holding Fixture..... 973.00

MODEL 301A - AIR POWERED ROLL MARKING PRESS
 without fixtures..... \$6538.00
 Lubricator, filter, regulator & guage (Installed)..... 565.00

MODEL 40B - NUMBERING & LETTERING PRESS
 Price: Model 40B Press - characters 1/16, 3/32, 1/8, 5/32, 3/16"..... 2342.00
 Extra Dials - 1/16 to 3/16" 690.00
 Extra Spacing Racks 122.00

MARKING FIXTURES
 Strip Holder - No. 113 158.00
 Nest 185.00
 Universal Key Nest 424.00

MODEL 136 - BENCH NUMBERING PRESS
 Price: Press only without numbering machine or type holder \$4126.00
 Adjustable Table 565.00
 Tripping Attachment 648.00

MODEL 136A -AIR POWERED BENCH NUMBERING PRESS
 Price: Press only without numbering machine or type holder \$6006.00
 Lubricator, filter, regulator & guage (Installed) 565.00
 Adjustable Table 565.00
 Tripping Attachment 648.00

MODEL 137 - MOTORIZED BENCH NUMBERING PRESS, with Single Stroke Control
 Price: Press with 1/4 HP Worm Gear Motor without marking device \$8133.00
 Adjustable Table 565.00
 Tripping Attachment 648.00

MODEL 116 - DOVETAIL ADAPTER
 Price..... \$396.00

MODEL 131 - HEAVY DUTY BENCH MARKING PRESS
 Price: Model 131 - Hand Operated without marking device \$5257.00
 Adjustable Table 662.00
 Tripping Attachment 648.00

MODEL 131A - AIR POWERED HEAVY DUTY BENCH MARKING PRESS
 Model 131A - Air Powered \$7474.00
 Adjustable Table 662.00
 Tripping Attachment 648.00
 Lubricator, filter, regulator & gauge (Installed) 565.00

MODEL 133 - MOTORIZED HEAVY DUTY BENCH MARKING PRESS, with Single Stroke Control
 Model 133 - 1/2 HP Worm Gear Motor \$8561.00
 Adjustable Table 662.00
 Tripping Attachment 648.00

HEAVY DUTY HARDENED TABLE INSERT for any of the above presses 241.00 extra with exchange
 Recommended for Marking Stainless Steel and simliar materials 317.00 without exchange

The best Heavy Duty High Alloy Tool Steel heat treated in controlled Atmosphere Furnaces is used in the manufacturing of all our Numbering Wheels and Type at no extra cost.

MADE AND
SERVICED IN USA
SINCE 1930

NUMBERALL

PRICE LIST

SUBJECT TO CHANGE WITHOUT NOTICE
EFFECTIVE - APRIL 27, 2026

For Multi-wheel Indenting Numbering Machines MODEL 70

MINIMUM ORDER \$50.00 TERMS: NET 30 CASH

RETURN ITEMS SUBJECT TO RESTOCKING CHARGE.
OBTAIN FACTORY AUTHORIZATION.

CHARACTER SIZE								
NUMBER OF WHEELS	1/32		3/64		1/16		3/32	
	CODE#	PRICE	CODE#	PRICE	CODE#	PRICE	CODE#	PRICE
3	70-3132	\$2623.00	70-3364	\$2364.00	70-3116	\$2048.00	70-3332	\$1851.00
4	70-4132	2994.00	70-4364	2693.00	70-4116	2337.00	70-4332	2114.00
5	70-5132	3376.00	70-5364	3024.00	70-5116	2628.00	70-5332	2385.00
6	70-6132	3756.00	70-6364	3358.00	70-6116	2919.00	70-6332	2638.00
7	70-7132	4226.00	70-7364	3803.00	70-7116	3304.00	70-7332	2984.00
8	70-8132	4714.00	70-8364	4236.00	70-8116	3679.00	70-8332	3334.00
9	70-9132	5213.00	70-9364	4674.00	70-9116	4060.00	70-9332	3674.00
10	70-10132	5695.00	70-10364	5114.00	70-10116	4447.00	70-10332	4019.00
11	70-11132	6180.00	70-11364	5542.00	70-11116	4814.00	70-11332	4371.00
12	70-12132	6667.00	70-12364	5979.00	70-12116	5196.00	70-12332	4709.00
13	70-13132	7160.00	70-13364	6420.00	70-13116	5582.00	70-13332	5058.00
14	70-14132	7639.00	70-14364	6852.00	70-14116	5955.00	70-14332	5402.00
15	70-15132	8133.00	70-15364	7296.00	70-15116	6340.00	70-15332	5743.00
16	70-16132	8615.00	70-16364	7733.00	70-16116	6723.00	70-16332	6073.00
17	70-17132	9102.00	70-17364	8167.00	70-17116	7097.00	70-17332	6420.00
18	70-18132	9585.00	70-18364	8609.00	70-18116	7484.00	70-18332	6766.00
STANDARD WHEELS ONLY	FIGURE	448.00		399.00		347.00		317.00
	LETTER	533.00		484.00		432.00		402.00
NUMBER OF WHEELS	1/8		5/32		3/16		1/4	
	CODE#	PRICE	CODE#	PRICE	CODE#	PRICE	CODE#	PRICE
3	70-318	\$1851.00	70-3532	\$2378.00	70-3316	\$2569.00	70-314	\$2934.00
4	70-418	2114.00	70-4532	2718.00	70-4316	2946.00	70-414	3356.00
5	70-518	2385.00	70-5532	3045.00	70-5316	3305.00	70-514	3760.00
6	70-618	2638.00	70-6532	3394.00	70-6316	3674.00	70-614	4194.00
7	70-718	2984.00	70-7532	3830.00	70-7316	4155.00	70-714	4748.00
8	70-818	3334.00	70-8532	4264.00	70-8316	4622.00	70-814	5287.00
9	70-918	3674.00	70-9532	4710.00	70-9316	5114.00	*70-914	5823.00
10	70-1018	4019.00	70-10532	5145.00	70-10316	5593.00	*70-1014	6375.00
11	70-1118	4371.00	70-11532	5593.00	70-11316	6064.00		
12	70-1218	4709.00	70-12532	6035.00	70-12316	6539.00		
13	70-1318	5058.00	*70-13532	6462.00	*70-13316	7014.00		
14	70-1418	5402.00	*70-14532	6908.00	*70-14316	7494.00		
15	*70-1518	5743.00						
16	*70-1618	6073.00						
STANDARD WHEELS ONLY	FIGURE	317.00		381.00		400.00		458.00
	LETTER	402.00		466.00		485.00		543.00

*SIZES NOT RECOMMENDED FOR MARKING STEEL DUE TO LENGTH OF WHEEL SHAFT, REFER TO MODEL 73 HEAVY DUTY. Above prices are for machines with all figure wheels and standard sharp face Gothic Character. (Refer to Catalog p.2). For other styles of engraving, special characters on wheels, hand shanks and special Press Shanks see page 4 of Price List. Standard Press Shanks 1" x 1-1/4" or 1" X 2". No Extra Charge.

PLEASE SPECIFY STYLE OF SHANK DESIRED AND IF PRESS GIVE DIMENSIONS. PRICES LISTED ARE F.O.B. SANGERVILLE, ME. Return items subject to restocking charge. Prior to all returns obtain factory return authorization number The best heavy duty high alloy tool steel heat treated in controlled atmosphere furnaces is used in the manufacturing of all our numbering wheels and type at no extra cost.

MODEL 80
One Wheel Quick Change

CHARACTER SIZE								
NUMBER OF WHEELS	1/32		3/64		1/16		3/32	
	CODE#	PRICE	CODE#	PRICE	CODE#	PRICE	CODE#	PRICE
3	80-3132	\$2984.00	80-3364	\$2719.00	80-3116	\$2411.00	80-3332	\$2218.00
4	80-4132	3358.00	80-4364	3057.00	80-4116	2702.00	80-4332	2491.00
5	80-5132	3723.00	80-5364	3391.00	80-5116	3007.00	80-5332	2760.00
6	80-6132	4102.00	80-6364	3718.00	80-6116	3285.00	80-6332	3013.00
7	80-7132	4576.00	80-7364	4155.00	80-7116	3651.00	80-7332	3356.00
8	80-8132	5071.00	80-8364	4591.00	80-8116	4027.00	80-8332	3697.00
9	80-9132	5555.00	80-9364	5072.00	80-9116	4412.00	80-9332	4020.00
10	80-10132	6037.00	80-10364	5452.00	80-10116	4791.00	80-10332	4373.00
11	80-11132	6510.00	80-11364	5876.00	80-11116	5175.00	80-11332	4712.00
12	80-12132	7004.00	80-12364	6320.00	80-12116	5542.00	80-12332	5058.00
13	80-13132	7486.00	80-13364	6758.00	80-13116	5917.00	80-13332	5402.00
14	80-14132	7971.00	80-14364	7184.00	80-14116	6295.00	80-14332	5743.00
NUMBER OF WHEELS	1/8		5/32		3/16		1/4	
	CODE#	PRICE	CODE#	PRICE	CODE#	PRICE	CODE#	PRICE
3	80-318	\$2218.00	80-3352	\$2727.00	80-3316	\$2926.00	80-314	\$3295.00
4	80-418	2491.00	80-4532	3060.00	80-4316	3297.00	80-414	3712.00
5	80-518	2760.00	80-5532	3404.00	80-5316	3650.00	80-514	4118.00
6	80-618	3013.00	80-6532	3736.00	80-6316	4020.00	80-614	4531.00
7	80-718	3356.00	80-7532	4163.00	80-7316	4497.00	80-714	5071.00
8	80-818	3697.00	80-8532	4607.00	80-8316	4967.00	80-814	5617.00
9	80-918	4020.00	80-9532	5047.00	80-9316	5443.00	*80-914	6148.00
10	80-1018	4373.00	80-10532	5493.00	80-10316	5917.00	*80-1014	6693.00
11	80-1118	4712.00	80-11532	5917.00	80-11316	6380.00		
12	80-1218	5058.00	80-12532	6352.00	80-12316	6859.00		
13	80-1318	5402.00	*80-13532	6783.00	*80-13316	7333.00		
14	80-1418	5743.00	*80-14532	7226.00	*80-14316	7801.00		

MODEL 85
Two Wheels Quick Change

NUMBER OF WHEELS	1/32		3/64		1/16		3/32	
	CODE#	PRICE	CODE#	PRICE	CODE#	PRICE	CODE#	PRICE
3	85-3132	\$3210.00	85-3364	\$2946.00	85-3116	\$2628.00	85-3332	\$2442.00
4	85-4132	3574.00	85-4364	3266.00	85-4116	2919.00	85-4332	2702.00
5	85-5132	3938.00	85-5364	3609.00	85-5116	3215.00	85-5332	2965.00
6	85-6132	4311.00	85-6364	3929.00	85-6116	3501.00	85-6332	3222.00
7	85-7132	4793.00	85-7364	4371.00	85-7116	3874.00	85-7332	3567.00
8	85-8132	5289.00	85-8364	4798.00	85-8116	4258.00	85-8332	3910.00
9	85-9132	5754.00	85-9364	5221.00	85-9116	4620.00	85-9332	4249.00
10	85-10132	6249.00	85-10364	5669.00	85-10116	5008.00	85-10332	4591.00
11	85-11132	6729.00	85-11364	6101.00	85-11116	5379.00	85-11332	4923.00
12	85-12132	7212.00	85-12364	6530.00	85-12116	5751.00	85-12332	5277.00
NUMBER OF WHEELS	1/8		5/32		3/16		1/4	
	CODE#	PRICE	CODE#	PRICE	CODE#	PRICE	CODE#	PRICE
3	85-318	\$2442.00	85-3532	\$2946.00	85-3316	\$3135.00	85-314	\$3501.00
4	85-418	2702.00	85-4532	3269.00	85-4316	3510.00	85-414	3910.00
5	85-518	2965.00	85-5532	3610.00	85-5316	3868.00	85-514	4329.00
6	85-618	3222.00	85-6532	3952.00	85-6316	4226.00	85-614	4752.00
7	85-718	3567.00	85-7532	4385.00	85-7316	4709.00	85-714	5277.00
8	85-818	3910.00	85-8532	4813.00	85-8316	5175.00	85-814	5820.00
9	85-918	4249.00	85-9532	5252.00	85-9316	5649.00	*85-914	6356.00
10	85-1018	4591.00	85-10532	5693.00	85-10316	6133.00	*85-1014	6901.00
11	85-1118	4923.00	85-11532	6133.00	85-11316	6592.00		
12	85-1218	5277.00	85-12532	6561.00	85-12316	7069.00		

*NOT RECOMMENDED FOR MARKING STEEL

For Prices of Extra Manual Set Wheels See Page 1 - Model 70 Wheels Only.
For Prices of Extra Quick Change Wheels See Page 3 - Model 83 Wheels Only.

MODEL 83

Selective Numbering Head - All wheels quick change and indexed ALL WHEELS HAVE 12 DIVISIONS ONLY

		CHARACTER SIZE							
NUMBER OF WHEELS	1/32		3/64		1/16		3/32		
	CODE#	PRICE	CODE#	PRICE	CODE#	PRICE	CODE#	PRICE	
4	83-4132	\$4167.00	83-4364	\$3735.00	83-4116	\$3239.00	83-4332	\$2930.00	
5	83-5132	4680.00	83-5364	4190.00	83-5116	3651.00	83-5332	3303.00	
6	83-6132	5192.00	83-6364	4667.00	83-6116	4053.00	83-6332	3682.00	
7	83-7132	5864.00	83-7364	5264.00	83-7116	4576.00	83-7332	4130.00	
8	83-8132	6548.00	83-8364	5870.00	83-8116	5110.00	83-8332	4622.00	
9	83-9132	7216.00	83-9364	6478.00	83-9116	5631.00	83-9332	5097.00	
10	83-10132	7889.00	83-10364	7081.00	83-10116	6155.00	83-10332	5575.00	
11	83-11132	8566.00	83-11364	7686.00	83-11116	6687.00	83-11332	6048.00	
12	83-12132	9236.00	83-12364	8297.00	83-12116	7210.00	83-12332	6524.00	
STANDARD WHEELS ONLY	FIGURE	489.00		445.00		392.00		378.00	
	LETTER	535.00		491.00		438.00		424.00	
NUMBER OF WHEELS	1/8		5/32		3/16		1/4		
	CODE#	PRICE	CODE#	PRICE	CODE#	PRICE	CODE#	PRICE	
4	83-418	\$2930.00	83-4532	\$3686.00	83-4316	\$3996.00	83-414	\$4558.00	
5	83-518	3303.00	83-5532	4136.00	83-5316	4487.00	83-514	5118.00	
6	83-618	3682.00	83-6532	4602.00	83-6316	4993.00	83-614	5685.00	
7	83-718	4130.00	83-7532	5195.00	83-7316	5642.00	83-714	6430.00	
8	83-818	4622.00	83-8532	5800.00	83-8316	6286.00	83-814	7170.00	
9	83-918	5097.00	83-9532	6401.00	83-9316	6942.00	*83-914	7913.00	
10	83-1018	5575.00	83-10532	6992.00	83-10316	7592.00	*83-1014	8654.00	
11	83-1118	6048.00	83-11532	7592.00	83-11316	8228.00			
12	83-1218	6524.00	83-12532	8190.00	83-12316	8879.00			
STANDARD WHEELS ONLY	FIGURE	378.00		411.00		445.00		493.00	
	LETTER	424.00		457.00		491.00		539.00	

MODEL 50

Automatic Numbering Head (SIX WHEELS INDEXED AUTOMATICALLY)

NUMBER OF WHEELS	1/32		3/64		1/16		5/64		3/32		1/8	
	CODE#	PRICE	CODE#	PRICE	CODE#	PRICE	CODE#	PRICE	CODE#	PRICE	CODE#	PRICE
4	50-4132	\$4770.00	50-4364	\$4393.00	50-4116	\$3831.00	50-4564	\$3831.00	50-4332	\$3441.00	50-418	\$3441.00
5	50-5132	5168.00	50-5364	4748.00	50-5116	4141.00	50-5564	4141.00	50-5332	3723.00	50-518	3723.00
6	50-6132	5553.00	50-6364	5101.00	50-6116	4449.00	50-6564	4449.00	50-6332	3996.00	50-618	3995.00
7	50-7132	6215.00	50-7364	5715.00	50-7116	4983.00	50-7564	4983.00	50-7332	4481.00	50-718	4481.00
8	50-8132	6878.00	50-8364	6333.00	50-8116	5515.00	50-8564	5515.00	50-8332	4951.00	50-818	4951.00
9	50-9132	7557.00	50-9364	6942.00	50-9116	6050.00	50-9564	6050.00	50-9332	5446.00	50-918	5446.00
10	50-10132	8218.00	50-10364	7557.00	50-10116	6583.00	50-10564	6583.00	50-10332	5917.00	50-1018	5917.00
11	50-11132	8879.00	50-11364	8165.00	50-11116	7117.00	50-11564	7117.00	50-11332	6404.00	50-1118	6404.00
12	50-12132	9554.00	50-12364	8776.00	50-12116	7649.00	50-12564	7649.00	50-12332	6878.00	50-1218	6878.00
STANDARD WHEELS ONLY	FIGURE	710.00		658.00		572.00		572.00		507.00		507.00
	LETTER	837.00		785.00		699.00		699.00		634.00		634.00
NUMBER OF WHEELS	5/32		3/16		1/4		5/16		3/8			
	CODE#	PRICE	CODE#	PRICE	CODE#	PRICE	CODE#	PRICE	CODE#	PRICE		
4	50-4532	\$4046.00	50-4316	\$4046.00	50-414	\$5142.00	50-4516	\$6050.00	50-438	\$6989.00		
5	50-5532	4372.00	50-5316	4372.00	50-514	5565.00	50-5516	6534.00	50-538	7558.00		
6	50-6532	4704.00	50-6316	4704.00	50-614	5990.00	50-6516	7035.00	50-638	8122.00		
7	50-7532	5268.00	50-7316	5268.00	50-714	6702.00	50-7516	7877.00	50-738	9100.00		
8	50-8532	5840.00	50-8316	5840.00	50-814	7420.00	50-8516	8723.00	50-838	10068.00		
9	50-9532	6402.00	50-9316	6402.00	50-914	8144.00	50-9516	9571.00	50-938	11046.00		
10	50-10532	6962.00	50-10316	6962.00	50-1014	8857.00	50-10516	10411.00	50-1038	12028.00		
11	50-11532	7520.00	50-11316	7520.00	50-1114	9585.00						
12	50-12532	8092.00	50-12316	8092.00	50-1214	10298.00						
STANDARD WHEELS ONLY	FIGURE	600.00		600.00		775.00		905.00		1041.00		
	LETTER	727.00		727.00		902.00		1032.00		1168.00		

*NOT RECOMMENDED FOR MARKING STEEL
The Best Heavy Duty High Alloy Tool Steel Providing Maximum Hardness and Shock Resistance
is used in the Manufacture of ALL our Numbering Wheels and Type AT NO EXTRA COST.

**NUMBERALL
MODEL**

EXTRA COST ITEMS		70	80	85	83	50
Letter Wheels instead of Figure Wheels	10 DIV	N.A.	N.A.	N.A.	N.A.	\$58.00 EA.
	12 DIV	\$60.00 EA.	\$60.00 EA.	\$60.00 EA.	\$46.00 EA.	N.A.
	14 DIV	\$85.00 EA.	\$85.00 EA.	\$85.00 EA.	N.A.	127.00 EA.
Wheels with other than standard Sequence of Engraving		\$90.00 EA.	\$90.00 EA.	\$90.00 EA.	\$90.00 EA.	\$90.00 EA.
Wheels Indexed For Direct Reading		\$66.00 EA.	1 WHEEL NO CHARGE: ADDITIONAL WHEELS \$66.00 EA.	2 WHEELS NO CHARGE: ADDITIONAL WHEELS \$66.00 EA.	ALL WHEELS INDEXED NO CHARGE.	\$58.00 EA.
Condensed or Extra Condensed Engraving		25%	25%	25%	25%	20%
Extended Style Sharp Face Gothic Engraving (1/4" maximum)		25%	25%	25%	25%	20%
Shaded Roman or Reverse Engraving		35%	35%	35%	30%	25%
Slightly Flat or Flat Face Gothic Engraving		30%	30%	30%	25%	20%
Extra Deep Engraving		30%	30%	30%	25%	20%
Round Face Gothic Engraving for Lo-Strain Marking		50%	50%	50%	40%	35%
Standard Handshank or Dovetail		\$78.00	\$78.00	\$78.00	\$78.00	\$78.00*
Non Standard Round Press Shank (special shanks by quotation)		142.00	142.00	142.00	142.00	142.00
Shank to fit Model 301		572.00	572.00	572.00	572.00	572.00
Standard machines equipped for Hot Stamping		\$819.00	\$906.00	\$993.00	1137.00	1024.00
Proportional Temp Control		1174.00	1174.00	1174.00	1174.00	1174.00
Insulated Mounting Plate		233.00	233.00	233.00	233.00	233.00
Multiple Duplication Attachment Adjustable 2-9,999 Repetitions Requires Air Trip						1855.00
Standard Air Trip Mechanism						1195.00
Air Trip Mechanism for Hot Stamping						1467.00

Above percentages for special engraving apply only when standard wheels can be used. We will be pleased to advise and quote when special wheel thickness, or other styles must be used. *Hand Shank by Special Quote.

NUMBERALL STAMP & TOOL CO., INC. BOX 187, HIGH ST., SANGERVILLE, ME. 04479